

# NewsLink



A NEWSLETTER OF LINK CHILD CARE RESOURCE & REFERRAL

## APRIL.MAY.JUNE 2024

Spring is upon us and the Link Professional Development Training Team is ready to put the winter blues behind us and PLAY...and we hope our providers are, too! The National Association for the Education of Young Children (NAEYC) reminds us that children learn best through their play. In fact, play and learning go hand-in-hand! We have learned that they are not separate activities, rather they are intertwined. Think of them as a science lecture with a lab...play is the child's lab! When the weather is colder, our natural tendency is to hunker down and cuddle up, but now that the weather is warmer, we hope you will trust your own playful instincts and make time to get outside and play with the children in your care! Not only is play healthy, it also provides an outlet for anxiety and stress which means this benefits the children AND you! Contact your Link PDDT today to get ideas on incorporating more opportunities for play into your learning environment...you won't regret it!



### INSIDE THIS ISSUE:

Link CCR&R PDDT .....	2
PD Session Descriptions.....	3
PD Schedule.....	6
Leadership Summit .....	12
The Growing Brain .....	13
WVEFCCS .....	14
WVIT II.....	15
FCCPBIS .....	16
COA Summit.....	17
WVIT I-R .....	18
WV ELSF I/T .....	19
Loose Parts .....	20
Behavioral Summit.....	21
Building a Firm Foundation....	22
Health & Safety Sessions .....	23
First Aid & CPR.....	26
You've Got TRAILS.....	27
Programs & Partners .....	28
Link CCR&R Information.....	36

# LINK CCR&R

## PROFESSIONAL DEVELOPMENT TRAINING TEAM

**Cristie Dunbar**

Link CCR&R Director  
Cristie.R.Dunbar@wv.gov



**Shannon Baldwin**

PD Supervisor  
Shannon.N.Baldwin@wv.gov



**Samantha Davenport**

Infant Toddler Coaching Specialist  
Samantha.D.Davenport@wv.gov



**Amber Swindler**

Child Care Coaching Specialist  
Amber.L.Swindler@wv.gov



**Courtney Golden**

Behavioral Consultant  
Courtney.D.Golden@wv.gov



**Becky Stewart**

Behavioral Consultant  
Rebecca.L.Stewart@wv.gov



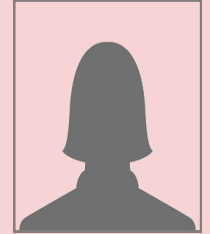
**Amy Willis**

Early Childhood Specialist  
Amy.D.Willis@wv.gov



**Now Hiring**

Early Childhood Specialist  
Open Position



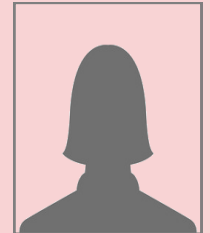
**Claire Culver**

Infant Toddler Specialist  
Claire.E.Culver@wv.gov



**Now Hiring**

Infant Toddler Specialist  
Open Position



**Melisa Dennison**

Early Childhood Specialist-TRAILS  
Melisa.A.Dennison@wv.gov



**Anna Curnutte**

TRAILS Early Childhood Associate  
Anna.R.Curnutte@wv.gov



**Jessica Wilcoxon**

Quality Improvement Specialist  
Jessica.L.Wilcoxon@wv.gov



*Play is the*  
**HIGHEST FORM**  
of research  
-Albert Einstein

# Descriptions of Professional Development Sessions

## **An Overview on the Importance of Child Observation and Assessment**

Participants will receive an overview of child observation and assessment along with information on why we observe children, different observation types, screenings, assessments, benefits, and tools needed to perform observation and assessments.

## **Building a Firm Foundation with TRAILS One Block at a Time**

In this series for family childcare providers, participants will receive an overview of the West Virginia Elements of Family Child Care Series. There are four 1-hour sessions that discuss how children grow, organizing a program, how children learn, and building relationships.

**\*There are technical assistance visits in addition to the sessions to support learning.**

## **Building Strong Foundations: Supporting Infants and Toddlers through the West Virginia Early Learning Standards Framework: Infant/Toddler**



Providers will explore the WV ELSF for Infants and Toddlers by discussing the purpose, content, application, and benefits of the learning standards, as well as how to incorporate each domain into a lesson plan. Providers will receive a detailed explanation of how the early learning standards work, basic understanding of observations, individualized lesson planning, and how to incorporate them into a complete group weekly lesson plan for infants and toddlers.

## **Conflict Resolution**

Are you constantly dealing with conflict in your classroom? Do you feel that all you are saying is, "No!" and "Stop that!" Do you spend a great deal of time resolving conflict in your room? If so, this training is for you. During this session, participants will be introduced to the definition of conflict from a child's perspective. We will discuss various struggles that are occurring in the classroom, and together, we will deliberate problem solving strategies to assist with those classroom conflicts.

## **Container Baby Syndrome**

This training explores the effects of Container Baby Syndrome with a focus on the adverse developmental impacts it has on infants. Infant Toddler caregivers will learn what restrictive equipment is, what developmental delays to look for, and how to prevent the over use of containers.

## **Emergency Preparedness**

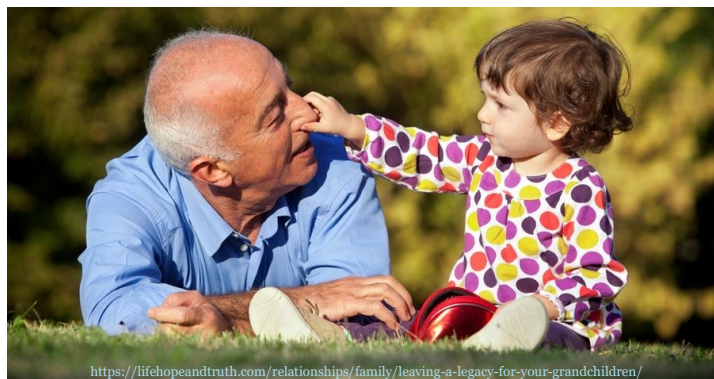


Participants will discuss the types of emergencies that can occur while children are in care and planning needed to keep children and workers safe during those events. Participants will receive support in creating the required emergency preparedness action plan.

## **Family Child Care Positive Behavior Intervention and Support Series (FCCPBIS)**



The Family Child Care Positive Behavior Intervention and Support Series focuses on social and emotional support in all childcare settings. This six-hour course is based on the Pyramid Model and will discuss evidence-based interventions that promote social, emotional, and behavioral development.



<https://lifehopeandtruth.com/relationships/family/leaving-a-legacy-for-your-grandchildren/>



# Descriptions of Professional Development Sessions

## Get the Scoop on Soutron! TRAILS is Online

This session will provide current and future TRAILS participants with the opportunity to learn about the Soutron platform and utilize the online service to make their TRAILS choices.

## Hands-On Play Party! A DIY Guide to Sensory Play

In this session, participants will learn how sensory play enhances learning in early childhood and easy DIY activities to help children explore the world through their senses.

## Introduction to Conscious Discipline

During this training, attendees will be exposed to the fundamental and beginning stages of Conscious Discipline. By the end of the session, they will be able to recognize and identify the differences between "traditional discipline" and Conscious Discipline.

## Loose Parts: The What, Why & How

In this series, participants will learn WHAT loose parts play is, WHY it is important and its benefits, as well as HOW to implement it for the children in their care.

## Planning Your Professional Growth

This training focuses on professional growth of early education providers and how to identify goals for the future.

## Professionalism 101

This training discusses the characteristics of professionalism in an early childhood educational setting.

## Preschool Child Portfolios

Do you want to learn how to create a preschool portfolio for the students in your classroom? In this training, participants will learn why keeping a portfolio for each child is important. We will discover how to start the portfolio process, track the child's development in several different learning areas, and learn to stay on track with managing the portfolios. This session will also include guidelines for recording, organizing, reflecting, and using anecdotal notes.

## Quality Counts

Why does high-quality childcare matter? Because the need for quality childcare has never been greater! But what does it look like in our state and how can we help? Through group discussion and the use of media, early childhood educators will examine program supports that are necessary to achieve and maintain quality childcare and the important role they play within the process.



# Descriptions of Professional Development Sessions

## **Room Arrangement: Calming the Chaos**

In this session, participants will learn about room arrangement and how it impacts the children as a class and individually.

## **Teamwork: Let's Work Together!**

This session will discuss teamwork at work, why it is important, and how to go from being a good team member to a great one. It will also get colleagues interacting with one another while having them work together as a team. In doing so, they will learn some things about their co-workers they may not have known prior to this session.

## **The 5 Ws for Lesson Planning**

This training will focus on lesson planning. We will discuss what makes a lesson plan, the planning process, the people involved in that process, and the information that needs to be included on a lesson plan. This training will also look at the differences between an individualized plan and a group plan.

## **The Growing Brain: From Birth to 5 Years Old**



This module series explores brain development of infants and young children from birth through age 5 in the context of relationships. Participants will investigate language and executive function and how the two are related. There will also be discussion of how relationships and attachment affect development and behavior and participants will discover how play positively affects children in all areas of development.

## **Understanding ACEs: ACEs 101**



During this training session, participants will be introduced to the concept of Adverse Childhood Experiences (ACEs) through awareness and education. Participants will learn about ACEs and the overall impact they have on children and adults. Participants will become familiar with the 10 types of ACEs and gain an understanding of ways to overcome them.

## **Understanding ECERS**

This training session will provide an overview of the Early Childhood Environmental Rating Scale Third Edition, which will include its purpose and how to use the scales to improve the quality of preschool environments.

## **Utilizing the Environment Rating Scale to Achieve Higher Program Quality**



This session will include an overview of the most recent versions of the Environmental Rating Scales as well as information on how to use the results from the self-assessment to improve program quality through goal setting and the creation of action plans and professional development plans. This training will be applicable to staff and administrators of childcare centers, facilities, and family childcare programs.

## **WV EFCCS**



West Virginia Elements of Family Childcare Series. This program was developed for family childcare providers to improve the quality of early care and education for children. The modules focus on topics ranging from "Becoming a Professional" and "Organizing Your Day" to "What Children are Learning" and "Working with Parents."

## **WVIT I-R**



Professional development is an ongoing process. Trainers and administrators will work together to monitor the personal and professional growth of infant/toddler caregivers and help to develop a plan that responds directly to the needs of the children in their care.

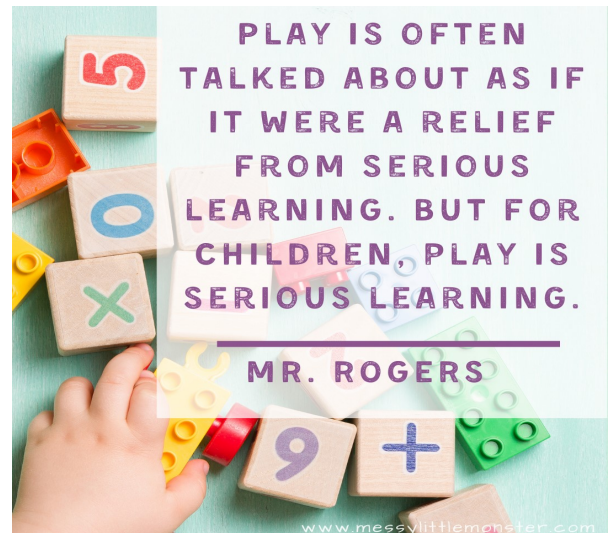
## **WVIT II Relationship Based Care**

This series is designed for infant/toddler caregivers who have successfully completed WVIT I or WVIT R. Trainers and caregivers will explore the caregiver-child relationship in depth during this course. There is a practicum project that is required to pass the course.



# April

DATE & TIME OF SESSION	LOCATION OF SESSION	CORE COMP TIER TARGET AGE	TITLE OF SESSION	PROFESSIONAL DEVELOPMENT PROVIDER
Thursday April 4th 1:30pm to 2:30pm	<b>Online</b>	CGD, FCR Basic All Ages	Understanding ACES: ACES 101	Courtney Golden
Tuesday April 9th 4:00pm to 5:00pm	<b>Link CCR&amp;R 1st Floor</b>	PL Basic All Ages	Quality Counts	Jessica Wilcoxon
Thursday April 11th 1:00pm to 3:00pm	<b>Online</b>	PL Basic All Ages	Teamwork: Let's Work Together!	Amy Willis
Monday April 15th 6:00pm to 8:00pm	<b>Link CCR&amp;R 2nd Floor</b>	CGD, EC Basic All Ages	Hands-On Play Party! A DIY Guide to Sensory Play	Melisa Dennison
Monday April 22nd 6:00pm to 8:00pm	<b>Link CCR&amp;R 2nd Floor</b>	EC, PL Basic Pre-K	Understanding ECERS	Amber Swindler
Tuesday April 23rd 1:00pm to 3:00pm	<b>Online</b>	EC Intermediate All Ages	Room Arrangement: Calming the Chaos	Amy Willis
Monday April 29th 6:00pm to 7:00pm	<b>Online</b>	CGD, EC, PL Basic All Ages	Get the Scoop on Soutron! TRAILS is Online	Melisa Dennison



# May

DATE & TIME OF SESSION	LOCATION OF SESSION	CORE COMP TIER TARGET AGE	TITLE OF SESSION	PROFESSIONAL DEVELOPMENT PROVIDER
Tuesday May 7th 5:30pm to 7:30pm	<b>Living Water Child Care</b>	PL, AM Basic All Ages	Planning Your Professional Growth	Jessica Wilcoxon
Monday May 13th 6:00pm to 8:00pm	<b>Winfield Child Development Center</b>	HSN Intermediate All Ages	Emergency Preparedness	Amy Willis
Tuesday May 14th 1:00pm to 4:00pm	<b>Online</b>	CGD, FCR Basic All Ages	Introduction to Conscious Discipline	Courtney Golden
Thursday May 23rd 12:00pm to 2:00pm	<b>Link CCR&amp;R 2nd Floor</b>	CGD, COA, EC, HSN Basic I/T	Container Baby Syndrome	Claire Culver
Wednesday May 29th 1:00pm to 2:00pm	<b>Online</b>	PL Basic All Ages	Professionalism 101	Jessica Wilcoxon



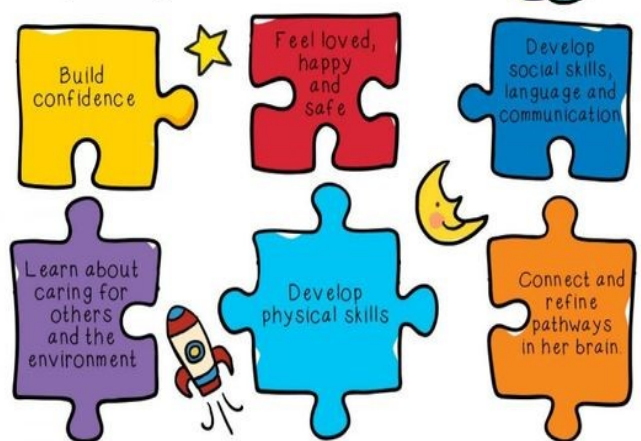
"We worry about what a child will become tomorrow, yet we forget that he is someone today."

Stacia Tauscher

Education is not a preparation for life. Education is life itself.

John Dewey

play HELPS a child...



# June

DATE & TIME OF SESSION	LOCATION OF SESSION	CORE COMP TIER TARGET AGE	TITLE OF SESSION	PROFESSIONAL DEVELOPMENT PROVIDER
Monday June 10th 6:00pm to 8:00pm	<b>Link CCR&amp;R 2nd Floor</b>	PL Basic All Ages	Teamwork: Let's Work Together	Amy Willis
Tuesday June 11th 5:30pm to 7:30pm	<b>Winfield Child Development Center</b>	PL, AM Basic All Ages	Utilizing the Environment Rating Scale to Achieve Higher Program Quality	Jessica Wilcoxon
Tuesday June 18th 12:30pm to 2:30pm	<b>Online</b>	CGD, EC Basic All Ages	The 5 W's of Lesson Planning	Jessica Wilcoxon
Tuesday June 25th 6:00pm to 8:00pm	<b>Link CCR&amp;R 2nd Floor</b>	EC Intermediate All Ages	Room Arrangement: Calming the Chaos	Amy Willis
Wednesday June 26th 6:00pm to 8:00pm	<b>Online</b>	CGD, FCR Basic All Ages	Conflict Resolution	Courtney Golden

## What Your Child LEARNS When They Play!

**PHYSICAL**

- Hand-eye coordination
- Finger dexterity and hand grips
- Strength
- Visual perception

**ORAL LANGUAGE**

- Describing
- Narrating
- Questioning
- Labeling
- Exchanging ideas
- Asking for help
- New vocabulary

**SOCIAL-EMOTIONAL**

- Motivation
- Self-confidence
- Autonomy
- Initiative
- Patience

**SCIENCE**

- Gravity
- Stability
- Trial and error
- Discovery
- Properties of materials

**ARTS**

- Shape recognition and relations (two squares make a rectangle)
- Patterns
- Line
- Symmetry
- Symbolic representation (a block can become a road or a car)

**ENGINEERING**

- Planning
- Problem-solving
- Consulting
- Proto-typing
- Design testing

**MATHEMATICS**

- Measurement
- Area
- Depth
- Width
- Height
- Length
- Order
- Numbers
- Classifying
- Shapes
- Size
- Symmetry
- Positional language (beside, above, through)



# One-Day Summit

DATE & TIME OF SESSION	LOCATION OF SESSION	CORE COMP TIER TARGET AGE	TITLE OF SESSION	PROFESSIONAL DEVELOPMENT PROVIDER
See Page 17	<b>Link CCR&amp;R 2nd Floor</b>	COA, CGD Basic All Ages	Child Observation & Assessment Summit	Sheila Zickefoose Amy Willis Amber Swindler
See Page 21	<b>Winfield Community Center</b>	CGD, EC, HSN Basic All Ages	Behavioral Consultant Summit	Courtney Golden Lea Wheeler

**THE TYPES OF Play**  
**IN EARLY CHILDHOOD**

- Symbolic Play**  
Using objects, or actions to represent other objects, actions, or ideas, e.g. using a cardboard tube like a telescope.
- Rough and Tumble Play**  
Discovering physical flexibility, generally friendly and positive.
- Socio-Dramatic Play**  
When children act out experiences, e.g. playing house.
- Creative Play**  
Allows children to explore, try out new ideas and use their imagination.
- Social Play**  
Any social situation where it's expected that everyone will follow the set rules like during a game.
- Communication Play**  
Play using words, gestures e.g. charades, telling jokes, play acting, etc.
- Dramatic play**  
Play where children figure out roles to play. Assign them and then act them out.
- Imaginative Play**  
Play where the conventional rules, which govern the physical world, do not apply, like imagining you are a bee, or pretending you have wings.
- Exploratory Play**  
Using senses of smell, touch and even taste to explore and discover the texture and function of things around them.
- Fantasy Play**  
Child's imagination gets to run wild and they get to play out things that are unlikely to occur, like being a pilot or driving a car.
- Deep Play**  
Play which allows the child to encounter risky experiences and conquer fear like heights, snakes, and creepy crawlies.
- Object Play**  
Play which uses sequences of hand-eye manipulations and movements, like using a paintbrush.
- Role Play**  
Play exploring ways of being, although not normally of an intense nature, like brushing with a broom, dialling with a telephone.
- Recapitulative Play**  
Play that allows the child to explore ancestry, history, rituals, stories, rhymes, fire and darkness.
- Locomotor Play**  
Movement for movement's sake, just because it's fun. Things like chase, tag, hide and seek and tree climbing.

# Module Series

DATE & TIME OF SESSION	LOCATION OF SESSION	CORE COMP TIER TARGET AGE	TITLE OF SESSION	PROFESSIONAL DEVELOPMENT PROVIDER
See Page 13	<b>Winfield Child Development Center</b>	CGD Basic All Ages	The Growing Brain: From Birth to 5 Years Old	Samantha Davenport Amber Swindler
See Page 14	<b>Link CCR&amp;R 1st Floor</b>	CGD, FCR, COA, EC, HSN, PL, AM Basic All Ages	West Virginia Elements of Family Child Care Series	Melisa Dennison
See Page 15	<b>Link CCR&amp;R 2nd Floor</b>	FCR, EC Advanced I/T	WVIT II: Relationship Based Care	Samantha Davenport
See Page 16	<b>Link CCR&amp;R 1st Floor</b>	CGD, FCR Intermediate All Ages	FCCPBIS	Courtney Golden
See Page 18	<b>Link CCR&amp;R 2nd Floor</b>	CGD, FCR, EC, HSN, PL, AM Basic I/T	WVIT I-R	Claire Culver
See Page 19	<b>Link CCR&amp;R 2nd Floor</b>	CGD, COA Basic I/T	Building Strong Foundations: Supporting Infants and Toddlers through the West Virginia Early Learning Standards Framework: Infant/Toddler	Samantha Davenport
See Page 20	<b>Link CCR&amp;R Room Varies</b>	CGD, EC Basic All Ages	Loose Parts: The What, Why, & How	Melisa Dennison



*“You can learn more about a child in one hour of play than you can in one year of conversation.”  
~ Plato*



# WHY PLAY MATTERS

The instinct to play is hard wired into the human DNA. When children play, they develop connections between the motor, perceptual, cognitive, social, and emotional areas of the brain. Critical thinking, communication, language, and emotional expression are also developed in play through trial and error. Impairments to cognitive, language, emotional, and physical development have all been linked to a deficit in play.



## CREATING THE CONDITIONS FOR PLAY

**FILL UP THEIR ATTACHMENT TANK**  
Playtime needs to be prefaced with contact and closeness from an attachment figure so that a young child's relational needs are satiated. A child under the age of 3 has high attachment needs and may not play on their own for a long time, needing to return to 'home base' often.

**CREATE VOIDS TO BE FILLED UP**  
We need to create the time and space where there is no competing activities like screens, peers, entertainment, structured activities, so that a child is free to explore and express themselves.

**PROVIDE STRUCTURE AND ROUTINE TO PROTECT PLAY**  
Set up rituals and rules to preserve play especially when it comes to screen time, playdates with peers, and instruction and schooling.

**DON'T PRAISE OR REWARD PLAY**  
If you try to reinforce play you will diminish their desire to play. Let the child's interests take the lead when it comes to deciding what to play with.

**VALUE PLAY** – If an adult doesn't value play and pushes for performance, outcomes, and getting ahead, then it will be harder for a child to feel free to play.



**Play is where the spirit that underlies growth is revealed and vitality is expressed.**

## CHILDREN WHO PLAY GROW UP TO BE PEOPLE WHO ...



Are able to see options and choices in their life

Assume responsibility for their words and actions

Think for themselves and withstand peer pressure

Want to be their own person with their own ideas

Value creativity and originality

Are full of their own plans and goals

Are self-directed learners

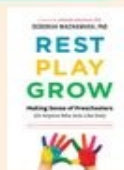
Are rarely bored

Are interested and curious



**Play is where children hear the ECHO of what is within them, RESONATE in the world that is around them.**

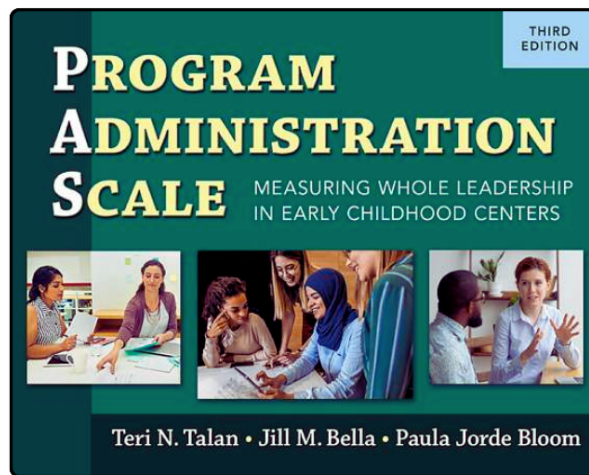
Facebook: Dr Deborah MacNamara  
Instagram: Deborahmacnamara  
Twitter: @debmacnamara  
www.macnamara



# Save the Date Leadership Summit:

## Program Administration Tools for Higher Quality

- Approved for Tier II applications and renewals.
- This summit is for child care center administrators only.
- Registration information coming this spring.



Presented by the Quality Improvement  
Specialist Network



One day summit, your choice in date. Space  
will be limited for each date.

# June | 27 or 28<sup>th</sup> | 2024

Bridgeport Conference Center  
300 Conference Center Way  
Bridgeport, WV 26330

# The Growing Brain: From Birth to 5 Years Old

*Professional Development for Early Childhood Professionals*

Decades of research indicate that the early years of life are a period of exponential brain development, characterized by great opportunity and vulnerability dependent on the child's relationships and environment.

*The Growing Brain: From Birth to 5 Years Old* is an innovative professional development opportunity that provides a toolkit of how the brain develops, along with ways you can encourage healthy brain development in children from birth to 5 years old.

Participants will develop skills and strategies to:

- understand the architecture and neurobiology of brain development
- support language, cognition, prosocial behavior, and social-emotional development
- reduce toxic stress that can negatively influence brain development of very young children

For more information, visit [www.zerotothree.org/growingbrain](http://www.zerotothree.org/growingbrain).



## Make Plans Today

- What** The Growing Brain Curriculum
- When** April 4-May 23, 2024 (No class April 25<sup>th</sup> due to Celebrating Connections)
- Where** Winfield Child Development Center  
12902 Winfield Rd. Winfield

## Hosted By

Samantha Davenport  
[Samantha.D.Davenport@wv.gov](mailto:Samantha.D.Davenport@wv.gov)  
(304)523-9540 ext.3479

&

Amber Swindler  
[Amber.L.Swindler@wv.gov](mailto:Amber.L.Swindler@wv.gov)  
(304)523-9540 ext.3432



*The Growing Brain: From Birth to 5 Years Old* is brought to you by ZERO TO THREE Professional Development and Workforce Innovations. PDWI aims to elevate the knowledge, skills, and abilities of the early childhood development field.

For additional professional development resources and trainings, visit [www.zerotothree.org/PDWI](http://www.zerotothree.org/PDWI).

# WV ELEMENTS OF FAMILY CHILD CARE SERIES

## WV EFCCS



### ABOUT WV EFCCS

This program was developed for family child care providers to improve the quality of early care and education for children. The seven modules focus on topics ranging from “Becoming a Professional” and “Organizing Your Day” to “What Children are Learning” and “Working with Parents.”


### UPCOMING TRAINING DATES

- Module 1 - April 23
- Module 2 - April 30
- Module 3 - May 7
- Module 4 - May 14
- Module 5 - May 21
- Module 6 - May 28
- Module 7 - June 5



**Sessions will be held at the  
Link office from 5:30-9:30PM**

For more information, or to sign up,  
contact Melisa Dennison, Early  
Childhood Specialist, TRAILS:

 304-523-9540, ext. 3462

 [Melisa.A.Dennison@wv.gov](mailto:Melisa.A.Dennison@wv.gov)

## West Virginia



Infant/Toddler Professional  
Development Program



# WVIT II:

## RELATIONSHIP BASED CARE

Session 1	Wednesday, May 8, 2024	12:00-3:30 pm
Session 2	Wednesday, May 15, 2024	12:00-3:30 pm
Session 3	Wednesday, May 22, 2024	12:00-3:30 pm
Session 4	Wednesday, May 29, 2024	12:00-3:30 pm
Session 5	Wednesday, June 12, 2024	12:00-3:30 pm
Session 6	Wednesday, June 19, 2024	12:00-3:30 pm
Session 7	Wednesday, June 26, 2024	12:00-3:30 pm
Session 8	Wednesday, July 3, 2024	12:00-3:30 pm
Session 9	Wednesday, July 10, 2024	12:00-3:30 pm
Session 10	Wednesday, July 17, 2024	12:00-3:30 pm

### Location:

Link CCR&R  
611 7th Avenue  
Huntington, WV 25701  
2nd Floor Conference Room

### For More Information, Please Contact:

Samantha Davenport  
Infant Toddler Specialist  
[Samantha.D.Davenport@wv.gov](mailto:Samantha.D.Davenport@wv.gov)

# FCCPBIS

## Family Child Care Positive Behavior Interventions and Support

### Family Child Care Behavior Interventions and Support Series:

This series concentrates on social and emotional supports of children in family childcare settings. Based on the Pyramid Model, this three session, six hour course will discuss evidence-based interventions that promote social, emotional, and behavioral development.



### Please Note:

You will need to attend all six hours and finish a Proof of Learning at the end of the training to receive WV STARS hours.



### Session Information:

#### Location:

Link CCR&R  
611 7th Ave., Huntington WV  
1st Floor Conference Room



#### Dates & Times:

Thursdays: May 9th, 23rd, 30th  
From: 12:30-2:30PM

### For More Information Contact:

Courtney Golden  
Behavioral Consultant  
E: courtney.d.golden@wv.gov  
P: 304-528-3473



# Child Observation and Assessment Summit

Approved Conference for Tier II Applications and Renewals

## When and Where

Link CCR&R is happy to host the Child Observation and Assessment Summit on May 20, 2024 from 9:00am–5:00pm. The Summit will be in the 2nd floor conference room at Link CCR&R's Huntington office.

## 6 WV STARS Hours

This Summit offers 3 great topics on the importance of continuous child observation and assessment. Check out the session topics. →

Attendance for the full day is required to receive credit.

## Registration

For more information, or to register, please contact Jessica Wilcoxon at [Jessica.L.Wilcoxon@wv.gov](mailto:Jessica.L.Wilcoxon@wv.gov) or 304-528-3412



### 01 Ages and Stages Questionnaire

Presented by: Sheila Zickefoose

### 02 An Overview on the Importance of Child Observation and Assessment

Presented by: Amy Willis

### 03 Preschool Child Portfolios

Presented by: Amber Swindler



# WVIT I-R

Session 1	Monday, June 3, 2024	1:00-4:30 pm
Session 2	Tuesday, June 11, 2024	1:00-4:30 pm
Session 3	Tuesday, June 18, 2024	1:00-4:30 pm
Session 4	Tuesday, June 25, 2024	1:00-4:30 pm
Session 5	Tuesday, July 2, 2024	1:00-4:30 pm

## TACIT VISITS

Session 6	Tuesday, July 23, 2024	1:00-4:30 pm
Session 7	Tuesday, July 30, 2024	1:00-4:30 pm
Session 8	Tuesday, August 6, 2024	1:00-4:30 pm
Session 9	Tuesday, August 13, 2024	1:00-4:30 pm
Session 10	Tuesday, August 20, 2024	1:00-4:30 pm
Session 11	Tuesday, August 27, 2024	1:00-4:30 pm
Session 12	Tuesday, September 3, 2024	1:00-4:30 pm

## TACIT VISITS

### West Virginia



**Infant/Toddler Professional Development Program**

Please contact Claire Culver, Infant Toddler Specialist, at [claire.e.culver@wv.gov](mailto:claire.e.culver@wv.gov) for more information.



**Classes will be held in person at the Link office at 611 7th Avenue, Huntington**

**PLEASE NOTE:**  
The first WVIT session will be held on a Monday, while the following sessions will be held on Tuesday, unless otherwise notified.



## BUILDING STRONG FOUNDATIONS:

Supporting Infants and Toddlers Through the West Virginia Early Learning Standards Framework: Infant/Toddler

**This is a nine-hour module series, broken up into three 3-hour classes. This series meets the criteria for the Infant Toddler Specialization with the WV Child Care Credential program.**

This course will provide an opportunity to explore the WV Early Learning Standards Framework for Infants and Toddlers (WV ELSF I/T) by focusing on two developmental domains each class. Each session will discuss the purpose, content, application, and benefits of the learning standards, as well as how to incorporate each domain into a lesson plan. By the end of the module series, participants will have a detailed explanation of how the early learning standards work, basic understanding of observations and individualized lesson planning and how to incorporate them into a complete group weekly lesson plan for infants and toddlers.

### **1** Module 1

Friday, June 7, 12:00pm - 3:00pm

### **2** Module 2

Friday, June 14, 12:00pm - 3:00pm

### **3** Module 3

Friday, June 21, 12:00pm - 3:00pm

## Location:

Link CCR&R  
611 7th Avenue  
Huntington, WV 25701

2nd Floor Conference Room

**Participants will receive  
9 hours of WV STARS  
credit after successful  
completion of series and  
proof of learning.**

**For more information please contact:**

Samantha Davenport  
Samantha.D.Davenport@wv.gov  
304-523-9540 ext. 3479

# Loose Parts Play The What, Why & How Module Series



In this 5-part series, participants will learn **WHAT** loose parts play is, **WHY** it is important and its benefits, as well as **HOW** to implement it for the children in their care.

For more information,  
or to sign up, contact:  
Melisa Dennison  
Early Childhood Specialist—  
TRAILS  
304-523-9540 Ext. 3462  
Melisa.A.Dennison@wv.gov

## Training Dates

**Module 1— June 18**

**Module 2— June 25**

**Module 3— July 2**

**Module 4— July 9**

**Module 5— July 16**

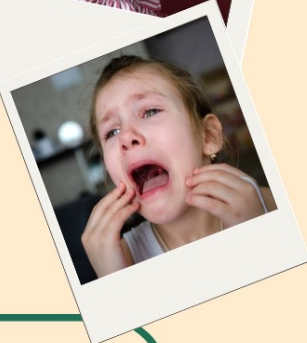
**Sessions 1-4 to be held at the Link Office, Session 5 Location To Be Determined**

**All Sessions 6:00-8:00 PM**



## BEHAVIORAL CONSULTANT SUMMIT

*Join us for a 6 hour STARS registered training addressing behaviors that may lead to expulsion and strategies to positively support individuals in your care.*



**Date: Saturday June 22, 2024**

**Time: 9:00 am- 4:00 pm**

**Location: Winfield Community Center  
178 Second St. Winfield, WV**

### TO REGISTER:



Courtney Golden  
304-528-3473



Courtney.D.Golden@wv.gov

**SPACE IS LIMITED  
REGISTER NOW!**



# Building a Firm Foundation with TRAILS: One Block at a Time

## Module 1:

How Children Grow

## Module 2:

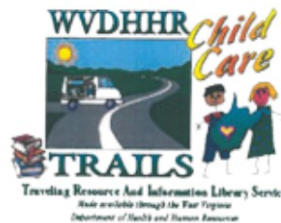
Organizing Your Home & Day

## Module 3:

How Children Learn

## Module 4:

Building Positive Relationships



**Contact TRAILS today for more information!**

Melisa Dennison  
Early Childhood Specialist-TRAILS  
Melisa.A.Dennison@wv.gov  
304-528-3462

Anna Curnutte  
Early Childhood Associate-TRAILS  
Anna.R.Curnutte@wv.gov  
304-528-3422

# TRAINING DAY



3 hours of free WV STARS training offered  
by the WV Child Care Nurse Health  
Consultant and the WV Child Care Health  
Educator

## TRAININGS OFFERED

- **Stress Management**  
3:00 PM - 5:00 PM  
Harmony Vance-Tisenbaum  
hvance@rvcds.org
- **Rashes and Scratches**  
5:00 PM - 6:00 PM  
Brittany Parsons  
brittany.parsons@rvcds.org

## JOIN US

**23 May 2024**

Link Resource and Referral Office  
Huntington, WV

**Register through WV  
STARS**

[www.wvstars.com](http://www.wvstars.com)



# CCHHE ONLINES TRAININGS

APRIL

**4**

**Bed Bugs and Beyond**

**6:30 PM - 8:30 PM**

Renee Stonebraker

APRIL

**18**

**Understanding Special Dietary Needs**

**6:30 PM - 8:30 PM**

Renee Stonebraker

APRIL

**29**

**All that Sugar and Fat**

**6:30 PM - 8:30 PM**

Harmony Vance-Tissnbaum

MAY

**7**

**Planting Seeds for Healthy Eating**

**6:30 PM - 8:30 PM**

Renee Stonebraker

MAY

**16**

**Oral Health**

**6:30 PM - 8:30 PM**

Harmony Vance-Tissnbaum

MAY

**22**

**Fun and Healthy Snacks**

**12:30 PM - 1:30 PM**

Harmony Vance-Tissnbaum

JUNE

**4**

**Let's Move**

**6:30 PM - 8:30 PM**

Renee Stonebraker

JUNE

**13**

**Picky Eaters**

**6:30 PM-8:30 PM**

Renee Stonebraker

JUNE

**24**


**Beans...More Than Just Cute Songs**

**6:30 PM - 8:30 PM**

Harmony Vance-Tissebaum



## Online Trainings Offered by Child Care Nurse Health Consultants April 2024-June 2024

Date	Time	Title and Description	Trainer
4/2/24	5:30-8:30 PM	<b>Medication Administration</b> 	Karen Gilbert
4/3/24	6:00-8:00 PM	<b>Communicable Diseases in Child Care</b> 	Candace Morgan
4/8/24	5:30-8:30 PM	<b>Medication Administration</b> 	Crystal Harclerode
4/11/24 <b>Lunchtime Learning</b>	12:00-1:00 PM	<b>Infection Control</b>	Candace Morgan
4/16/24	6:00-7:00 PM	<b>Rashes &amp; Scratches</b>	Lisa Galford
4/22/24	5:30-8:30PM	<b>Medication Administration</b> 	Brittany Parsons
5/4/24 <b>Saturday Morning</b>	8:00-11:00 AM	<b>Medication Administration</b> 	Candace Morgan
5/8/24	6:00-7:00 PM	<b>Seizures</b>	Karen Gilbert
5/14/24	6:00-8:00 PM	<b>Summertime Safety</b>	Lisa Galford
5/21/24	6:30-8:30 PM	<b>Communicable Diseases in Child Care</b> 	Candace Morgan
5/23/24	5:30-8:30 PM	<b>Medication Administration</b> 	Karen Gilbert
6/5/24	5:30-8:30 PM	<b>Medication Administration</b> 	Candace Morgan
6/11/24	6:00-8:00 PM	<b>Summertime Safety</b>	Lisa Galford
6/18/24	6:00-7:00 PM	<b>Seizures</b>	Karen Gilbert
6/20/24	5:30-8:30 PM	<b>Medication Administration</b> 	Lisa Galford
6/25/24	6:00-8:00 PM	<b>Communicable Diseases in Child Care</b> 	Candy Morgan

Training Topic	Summary
<b>Communicable Diseases</b>	Tips for minimizing the spread of infection in programs as well as information about common communicable diseases.
<b>Summertime Safety</b>	This presentation includes information about recognizing and preventing various heat related conditions along with first aid for each condition. Water and Bug Safety is included.
<b>Seizures</b>	This training provides information about recognizing types of seizures, basic first aid for seizures, recognizing medical emergencies and medication administration for seizures.
<b>Rashes &amp; Scratches</b>	Information about various skin conditions that young children experience.
<b>Medication Administration</b>	Participants will be introduced to safe medication handling and administration practices. This training is required for providers to administer medication to children in the childcare setting.
<b>Infection Control</b>	Basic information about infection control concerns in the childcare setting. Information provided includes hand washing, sanitation and disinfection principles, and universal/standard precautions.

## CPR & First Aid Classes

This list of agencies offering First Aid and CPR is made available to you for resource purposes only.  
**Link CCR&R is not responsible for the following trainings or registration for these trainings.**

**Boone County:** Kanawha Co. Red Cross: Call 340-3650 or [www.redcross.org](http://www.redcross.org)

**Cabell County:** Vicki Delaney: Call or Text 606-547-6144 or Email [paths20@aol.com](mailto:paths20@aol.com)  
American Red Cross: Call 304-526-2900  
Cabell County EMS: Contact Lisa Cooper 304-526-9797  
Salt Rock Fire Dept.: Call 304-733- 9040  
Goodwill Industries of KYOWVA Area, Inc.: Contact Andrea Lupson 304-523-7461 ext.417

**Lincoln County:** Dorothy or William Frazier: Call 304-778-3873

**Logan County:** LEASA County Public Rescue: Call 304-752-0917  
Logan Regional Medical Center: Contact Cindy Fleming—Education Dept. 304-831-1556

**Mason County:** Pleasant Valley Hospital: Call 304-675-4340

**Putnam County:** Active Sports Complex (aka Ayash Center): Contact Scott Nasby 304-741-4079

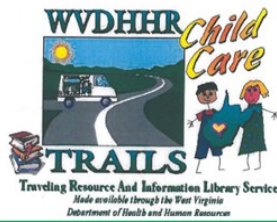
## **CPR & FIRST AID CLASSES**

Available in Boone, Cabell, Lincoln, Logan,  
Mason, Mingo, Putnam and Wayne Counties!



**The beat of a heart can change a life. Learn CPR and be the rhythm that saves a life.**





# YOU'VE GOT TRAILS

Quarterly Tidbits From Your TRAILS Team

## Gardening with Kids

Spring has sprung and everything is in bloom! Gardening is perfect for learning across all domains, and it encourages good nutrition for children. Here are 10 tips for preparing a kid-friendly garden:

- Give children a voice when planning.
- Create a special garden bed and get them their own tools.
- Incorporate arts and crafts into the garden.
- Plant a variety of colorful flowers.
- Involve them in meal preparation.
- Let them pick out seeds with you.
- Start with planting the seedlings indoors.
- Plant things that can be picked and eaten in the garden.
- Take lots of pictures.
- Incorporate science and math, and lots and lots of books.

For more information, visit <https://www.epicgardening.com/gardening-with-kids/>



TRAILS is offering the WV Elements of Family Child Care Series beginning April 23rd. This 7-part series gives **family child care providers** a deep dive into child development, developmentally appropriate practice, and curriculum.

TRAILS will also offer the Loose Parts Module Series beginning June 18th. This 5-part series gives all child care providers the basic knowledge needed to incorporate loose parts play into their programs.

See pages 14 and 20 for more information.



## \*\*INVENTORY SPOTLIGHT\*\*



Check out these child-sized gardening tools! They are the perfect size for little hands to work along-side you in the garden!

Contact TRAILS to access our online inventory to request these awesome items!



Melisa Dennison  
TRAILS Early Childhood Specialist  
Melisa.A.Dennison@wv.gov  
304-523-9540 Ext. 3462

## Your TRAILS Team



Anna Curnutte  
TRAILS Early Childhood Associate  
Anna.R.Curnutte@wv.gov  
304-523-9540 Ext. 3422





# TRAILS

TRAVELING RESOURCE AND  
INFORMATION LIBRARY SERVICE

NOW  
ONLINE!

←.....→  
You Shop, We Deliver!

## HOW CAN TRAILS BENEFIT YOU?

### COST EFFECTIVE

TRAILS gives you an opportunity to try before you buy! Borrow toys, books, and resources for your site. Regular providers receive free consumables such as paint, paper, and crayons!

### CONVENIENCE

We come to you! Keep your program fresh and exciting by rotating your available resources. Simply check out new items on our website and we will deliver them directly to your door!

### OPPORTUNITY

TRAILS can provide you with required training hours, other PD opportunities, and technical assistance. We also offer DIY ideas and supplies and promote /offer materials for Loose Parts Play!



Link CCR&R 304-523-9540  
Melisa Dennison TRAILS ECS  
Anna Curnutte TRAILS ECA



For More Info Contact:  
Melisa.A.Dennison@wv.gov  
Anna.R.Curnutte@wv.gov

Save the Date

# 2024 PROVIDER APPRECIATION

What to expect:

Refreshments

Door Prizes

Networking Opportunities

Exploring Community Resources

MAY

1

8:30AM-  
4:30PM

LINK CCR&R

611 7th Ave. Suite 100  
Huntington, WV 25701

More Info :

Check out our Facebook for more  
info as we approach May 1st



The West Virginia Breastfeeding-Friendly Child Care Designation (BFCCD) offers resources to child care providers who support breastfeeding mothers. A child care provider enrolled in the initiative will receive support from Infant/Toddler Specialists, Child Care Nurse Health Consultants, and Child Care Health Educators to complete the 10 steps of the initiative. Upon completion of the 10 steps, the site will receive a certificate of designation in addition to help with resources and start up.

FOR MORE INFORMATION,  
CONTACT YOUR INFANT/  
TODDLER SPECIALISTS AT  
LINK CCR&R:

Samantha Davenport  
Samantha.D.Davenport@wv.gov  
304-523-9540 ext. 3479

Claire Culver  
Claire.E.Culver@wv.gov  
304-523-9540 ext. 3434

TO APPLY FOR THE  
BREASTFEEDING-  
FRIENDLY CHILD CARE  
DESIGNATION:

1. Go to [wvit.org](http://wvit.org)
2. Click on BFCCD at the top of the page.
3. Read through the initiative description, including the 10 steps to receive the designation.
4. Follow the directions to submit your application.

# Save the Date



**Celebrating Connections 2024**  
Building Lifelong Learners: Constructing Solid  
Foundations for Young Children

**April 24-26, 2024**  
Charleston Coliseum &  
Convention Center  
Charleston, WV

<https://www.eventsquid.com/event/20792>



**Inviting all vendors and exhibitors!**  
**Vendor registration opens January 1, 2024**  
**Please contact Sara Miller at [smiller@rvcds.org](mailto:smiller@rvcds.org)**  
**with any questions**



RIVER VALLEY CHILD  
DEVELOPMENT  
SERVICES



# ACDS REGISTRATION

## ABOUT ACDS

ACDS is a four semester apprenticeship program for individuals working directly with children birth to age 12 for a minimum of 20 hours a week. Classes are one evening a week for 15 weeks a semester. Virtual classes are available for counties that do not offer an in-person option.

## PARTICIPATION

Registration for the fall term starts June 1 and for the spring term November 1 each year. Interested participants should follow the outlined steps to register for class each term.

## REGISTRATION



### STEP ONE

Visit the WV STARS training calendar and search self-paced courses for all ACDS orientations.



### STEP TWO

Complete registration that is linked at the end of each orientation.



### STEP THREE

Submit \$25.00 registration fee to ACDS program. Checks and cards are accepted. Credit card form is on ACDS website.



304-523-0433



[www.wvacds.org](http://www.wvacds.org)



[wvacds@rvcds.com](mailto:wvacds@rvcds.com)





# JOIN OUR LOCAL COUNCILS



## Meetings

Small groups meet twice a year to discuss the implementation of ACDS in their counties.

## Members

Members include directors, child care resource & referral, BOE, head start, instructors journeypersons, and family child care providers.



# JOIN US NOW!

To find out more information about the local council in your area, visit the ACDS website and go to the local council page under resources.

[www.wvacds.org](http://www.wvacds.org)

## FOOD REIMBURSEMENT



For information about enrolling in the Family Child Care Food Program to help with the costs of meals and snacks you serve the children in your care, please contact the following agency:



<p><b><u>Central Child Care</u></b></p> <p>Serving Boone County (304) 382-0797</p>	<p><b><u>Pride of Logan County</u></b></p> <p>Serving Logan County (304) 752-6868 or (304) 752-1047</p>	<p><b><u>River Valley Family Child Care Food Program</u></b></p> <p>Serving Cabell, Lincoln, Mason, Mingo, Putnam and Wayne Counties (304) 523-3417 ext.3446 or 1-304-751-5253</p>
--	---	--

In accordance with Federal law and U.S. Department of Agriculture (USDA) policy, this institution is prohibited from discriminating on the basis of race, color, national origin, sex, age, or disability. To file a complaint alleging discrimination, write USDA, Director, Office of Civil Rights, 1400 Independence Avenue SW, Washington, DC 20250-9410 or call, toll free, (866) 632-9992 (Voice). Individuals who are deaf, hard of hearing or have speech disabilities may contact USDA through the Federal Relay at (800) 877-8339 or (800) 845-6136 (Spanish). USDA is an equal opportunity provider. and employer.

**FOOD PLAY**  
*for Classroom Centers*

- FARMER'S MARKET IN DRAMATIC PLAY
- FOOD THEMED BOOKS IN LIBRARY
- STAMPING WITH FRUIT IN ART
- FOOD SHAPED PILLOWS IN COZY CORNER
- VEGGIE GARDEN IN SENSORY BIN
- FOOD THEMED PUZZLES
- MEASURING CUPS IN MATH
- FOOD SCALES IN SCIENCE

**PLAY TURNS  
OUT TO BE SO  
STUNNINGLY  
ESSENTIAL TO  
CHILDHOOD,  
IT'S LIKE  
LOVE,  
SUNSHINE,  
& BROCCOLI  
ALL JUICED  
TOGETHER.**

*Share & Remember* Lenore Skenazy

# CABELL/WAYNE FAMILY CHILD CARE ASSOCIATION



[https://www.huffpost.com/archive/ca/entry/outdoor-play-kids-health-worry\\_ca\\_5d7a9fcb4b001b55269fc38](https://www.huffpost.com/archive/ca/entry/outdoor-play-kids-health-worry_ca_5d7a9fcb4b001b55269fc38)

The Cabell Wayne Family Child Care Association would like to invite ALL providers from ALL counties to join. If you have any questions, feel free to call or text Kathy Baker, President, at 304-638-7578, or email her at [mrskathys@comcast.net](mailto:mrskathys@comcast.net) so you can start receiving information about the Association and other helpful information. They would like to have all providers' email addresses, so please email Kathy at the address above to be added to the listserv. They hope to see lots of new providers at the meetings.

**PLAY** really is the  
*work of*  
**CHILDHOOD**  
- Fred Rogers



National Association for Family Child Care

*Your Home. Your Profession. Our Commitment.*

Are you interested in making \$6 more per child per day???? If so, contact Kathy Baker at 304-638-7578 or email at [mrskathys@comcast.net](mailto:mrskathys@comcast.net) for more details.



*"Almost all creativity includes purposeful play."  
~ Abraham Maslow*



**LINK CHILD CARE  
RESOURCE &  
REFERRAL**

Link Child Care Resource & Referral is a program of River Valley Child Development Services, Inc. and is being presented with financial assistance as a grant from the West Virginia Department of Human Services.

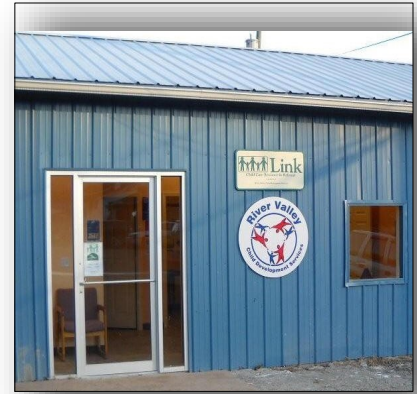
Visit us on the web:  
[www.linkccrr.org](http://www.linkccrr.org) or  
[www.rvcds.org](http://www.rvcds.org)

**COME SEE US!**



**MAIN LINK OFFICE**

611 7TH AVE.  
HUNTINGTON, WV 25701  
(800) 894-9540 OR  
(304) 523-9540  
(304) 697-4821 FAX



**LOGAN OFFICE**

19 CIRCLE DR.  
LOGAN, WV 25601  
(304) 752-3932  
(304) 752-2897 FAX

Link Child Care  
Resource &  
Referral  
611 7th Avenue  
Huntington, WV 25701



[www.facebook.com/](http://www.facebook.com/)



<http://www.rvcds.com/search?k=kids+thank+you+note>