



NewsLink



A Professional Development Calendar of Link Child Care Resource and Referral

APRIL, MAY, JUNE 2026



INSIDE THIS ISSUE:

- Link CCR&R PDTT2
- PD Session Descriptions.....4
- PD Schedule.....7
- WV Child Care Credential Training Schedule.....11
- Emergency Preparedness in Family Child Care12
- Foundations for a School Age Early Education Provider.....13
- Director's Toolbox.....14
- Emergency Preparedness.....15
- Developmentally Appropriate Practice in Preschool.....16
- Summer Learning Summit17
- ECERS-318
- Upcoming Events.19
- Child Care Health Educator.....22
- CCHE Trainings.....23
- CCNHC Trainings.....24
- CPR & First Aid.....25
- You've Got TRAILS.....27
- How to Use Soutron.....29
- Quarterly Director's Meeting.....30
- Link Programs & Partners31
- Link Business Corner36



Link CCR&R

Professional Development Training Team

Cristie Dunbar

Link CCR&R Director
Cristie.R.Dunbar@wv.gov



Samantha Davenport

PD Supervisor
Samantha.D.Davenport@wv.gov



Claire Culver

Infant Toddler Coaching Specialist
Claire.E.Culver@wv.gov



Erin Ritchie

Child Care Coaching Specialist
Erin.A.Ritchie@wv.gov



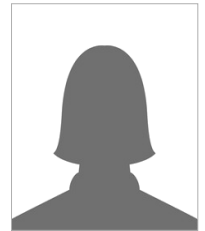
Becky Stewart

Behavioral Consultant
Rebecca.L.Stewart@wv.gov



VACANT

Behavioral Consultant



Amy Willis

Early Childhood Specialist
Amy.D.Willis@wv.gov



Jessica Wilcoxon

Early Childhood Specialist
Jessica.L.Wilcoxon@wv.gov



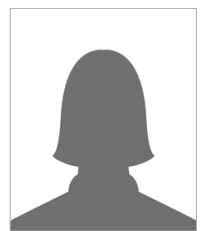
Jennifer Meadows

Infant Toddler Specialist
Jennifer.M.Meadows@wv.gov



VACANT

Infant Toddler Specialist



Melisa Dennison

Early Childhood Specialist-TRAILS
Melisa.A.Dennison@wv.gov



Amber Swindler

Early Childhood Specialist-TRAILS
Amber.L.Swindler@wv.gov



Leah McCallister

Quality Improvement Specialist
Leah.H.McCallister@wv.gov





Introducing

Link's New Infant Toddler Specialist

I am Jennifer Meadows, the new infant/toddler specialist. I have a husband, 2 adult daughters, and 2 dogs and live in Barboursville. After graduating with an associate's degree in child care from Fairmont State University (way back then, it was Fairmont State College), I started my career by working in centers through various positions from teacher to assistant director. I took a break from early childhood to work for Cabell County Schools and have the same schedule as my daughters. Once they reached high school, I completed my bachelor's degree at Marshall University. This opened up more opportunities for me to get back in the early childhood field in a training capacity, a passion of mine. I am very excited to join RVCDS and want to thank everyone for their friendliness and willingness to help.

Descriptions of Professional Development Sessions

Quality Through Collaboration

This training focuses on trending topics, goals, and challenges in the early childhood field faced by facility-based and center-based directors and administrators of child care programs.

Family Child Care Emergency Preparedness

This in-person session will provide guidance to WV Family Child Care providers (FCC) and WV Family Child Care facilities on how to respond to disasters that may affect them in West Virginia. The provider will receive information on how to become prepared for different types of emergencies utilizing documents required by the WV Department of Human Services utilizing an ongoing cycle that includes four phases: Mitigation, Preparedness, Response, and Recovery. There is a required TA visit which participants will complete as part of the course for the proof of learning.

Social-Emotional Development and Dramatic Play

This session will discuss social-emotional development and dramatic play. The participants will learn what they are, why they are important and the benefits of each individually as well as how they are connected. Milestones and social skills will also be reviewed, and participants will engage in group discussions about what activities they are currently doing in their classrooms that help develop and build upon the different milestones and social skills discussed. The different types of dramatic play and the social-emotional development and skills that can be observed during play will also be outlined. Finally, participants will learn what they can do to promote social-emotional skills in dramatic play.

Preschool Child Portfolios

Do you want to learn how to create a preschool portfolio for the students in your classroom? In this training, participants will learn why keeping a portfolio for each child is important. We will discover how to start the portfolio process, track the child's development in several different learning areas, and learn to stay on track with managing the portfolios. This session will also include guidelines for recording, organizing, reflecting and using anecdotal notes.

RR Spreading HOPE

The HOPE training will cover the effects of ACEs on health outcomes, the importance of positive childhood experiences, and the research showing their mitigating effects on ACEs as well as the biologic basis for these effects. We will introduce the four building blocks of HOPE and discuss type 1 vs. type 2 thinking. The presentation will present some ideas of how to incorporate the HOPE Framework into practice.

Active Play: The Importance of Movement in Early Childhood

This session will focus on the importance of movement for young children, both indoors and outdoors, with active play strategies to incorporate into your daily routines.

An Overview of the Importance of Child Observation and Assessment

Participants will receive an overview of child observation and assessment along with information on why we observe children, the different observation types, screenings, assessments, the benefits and tools needed to perform the observation and assessments.

Utilizing the Environmental Rating Scale to Achieve Higher Program Quality

This session will include an overview of the most recent Environmental Rating Scales, as well as information on how to use the information from the self-assessment to improve program quality through goal setting and the creation of action plans and professional development plans.

Descriptions of Professional Development Sessions

Appropriate Supportive Environments

The environment can play a significant role in an early childhood classroom to promote social-emotional development and lessen challenging behaviors. This training will equip Early Childhood Professionals with the tools to set up their environment for optimal child social-emotional success.

Relationship Building: The Key to Success

This training will discuss strategies to help early education professionals to build strong, nurturing, and positive relationships with the preschool and school aged children in their program.

Playing Games & Building Brains

Do you know the benefits of playing games with children? During this session, providers will identify how playing games helps to support learning and development in children from 6 months old to 17 years old. Participants will connect how executive function and self-regulation skills are developed through playing games. We will also explore brain building activities and create a list of games for each age group.

Expectations and Guidance Versus Rules and Punishments

When faced with challenging behavior in an early childhood classroom the first instinct is to enact rules and punishments. The approach of teaching expectations and providing positive guidance offers an alternative to the frustration of the rule and punishment cycle. We will look at the expectation and positive guidance approach for prevention of challenging behaviors in the early childhood classroom. Strategies for teaching engagement and pro-social skills will be covered along with methods to determine the functions of challenging behaviors.

Why So Dramatic? The Importance of Pretend Play

In this 1-hour session, participants will learn the benefits of pretend play and what materials and experiences to offer in their dramatic play areas to help create an ideal learning environment.

We Put the Care in Child Care

This training focuses on four types of care that can be used in a preschool or school age environment. We will define primary care, continuity of care, responsive care, and individualized care. We will examine the benefits of each approach and how they can be utilized with preschoolers and school age groups.

Emergency Preparedness

Participants will discuss the types of emergencies that have and can occur while children are in care and planning needed to keep children and workers safe during those events. Participants will receive support in creating the required emergency preparedness action plan. There is also a 1 hour TA Visit required.

It's All About Emotions: Promoting Social-Emotional Development for School Readiness and Challenging Behavior Prevention

Social Emotional Competence is often overlooked as a critical school readiness skill. Preschool children with age-appropriate or advanced social-emotional skills usually have an easier transition to kindergarten and fewer challenging behaviors. This training examines the essential social-emotional skills to be taught to promote school readiness and limit challenging behaviors. Resources available to teach these skills will be identified.

<https://www.gettyimages.com/search/2/image-flip?>

Descriptions of Professional Development Sessions

Outside: Mother Nature's Classroom!

This session will move participants to consider that there is more to experience than just what is inside their programs. Mother Nature has a lot to offer at no cost and it is literally right outside the door.

Active Supervision

This training looks at active supervision as a strategy to keep children safe and prevent challenging behaviors. Six active supervision strategies and different ways to implement active supervision in your program will be covered.

Ready, Set, Play! A Simple Guide to Exploring the Areas of Curriculum

This session will provide participants an opportunity to learn the importance of each area of curriculum and how to effectively create centers.

Conflict Resolution and Problem Solving

In this training session, participants will be introduced to the definition of conflict from a child's perspective. We will discuss various struggles occurring in the classroom and problem-solving strategies to assist with classroom conflicts.

A General Overview of Assessments for Early Childcare Professionals

This training will provide information on the different types of assessments available to an early childcare professional. We will also go over how to utilize the information gathered from assessments.



April

Date & Time of Session	Location of Session	Core Comp Tier Target Group	Title of Session	Professional Development Provider
Wednesday April 1 1:30 pm-2:30 pm	Link CCR&R 2nd Floor	A&M, P&L	Quality Through Collaboration	Leah McCallister
Thursday April 2 5:30 pm-8:00 pm	Hamlin-Lincoln County Public Library	HSN, P&L, A&M Basic FCC	Family Child Care Emergency Preparedness	Amber Swindler Claire Culver
Tuesday April 7 6:00 pm-8:00 pm	Online	CGD, EC Basic All Ages	Social-Emotional Development and Dramatic Play	Amy Willis
Tuesday, April 14 5:30 pm-7:30 pm	Online	CO&A, CG& D Basic Preschool	Preschool Child Portfolios	Amber Swindler
Thursday April 16 6:00 pm-7:30 pm	Online	CG&C, F&CR Basic All Ages	RR Spreading HOPE	Becky Stewart
Monday April 20 6:00 pm-7:30 pm	Online	CGD, EC Basic All Ages	Active Play: The Importance of Movement in Early Childhood	Melisa Dennison
Tuesday April 21 6:00 pm-7:00 pm	Online	COA Basic Preschool	An Overview of the Importance of Child Observation and Assessment	Amy Willis
Wednesday April 22 1:30 pm-3:30 pm	Online	P&L, A&M Intermediate All Ages	Utilizing the Environmental Rating Scale to Achieve Higher Program Quality	Leah McCallister
Wednesday April 29 12:00 pm-2:00 pm	Online	CG&D, E&C Basic Preschool, Admin, FCC	Appropriate Supportive Environments	Becky Stewart

May

Date & Time of Session	Location of Session	Core Comp Tier Target Group	Title of Session	Professional Development Provider
Tuesday May 5 4:00pm-6:00 pm	Online	CDG Basic Preschool/ School Age	Relationship Building: The Key to Success	Jessica Wilcoxon
Tuesday May 5 6:00 pm-7:30 pm	Online	CGD Basic All Ages	Playing Games & Building Brains	Amber Swindler
Thursday May 7 6:00 pm-8:00 pm	Online	CG&D, F&CR, E&C Basic Preschool/ Admin	Expectations and Guidance Versus Rules and Punishments	Becky Stewart
Monday May 18 6:00 pm-7:00 pm	Online	CGD, EC Basic All Ages	Why So Dramatic? The Importance of Pretend Play	Melisa Dennison
Wednesday May 20 1:00 pm-3:00 pm	Online	COA Basic Preschool/ School Age	We Put the Care in Child Care	Jessica Wilcoxon
Wednesday May 27 10:00 am-12:00 pm	Link CCR&R 2nd Floor	HSN Intermediate Preschool	Emergency Preparedness	Amy Willis
Thursday May 28 12:00 pm-2:00 pm	Online	CGD, EC Basic Preschool/ Admin	It's All About Emotions: Promoting Social-Emotional Development for School Readiness and Challenging Behavior Prevention	Becky Stewart
Thursday May 28 1:00 pm-3:00 pm	Online	EC Intermediate Preschool	Outside: Mother Nature's Classroom!	Amy Willis

June

Date & Time of Session	Location of Session	Core Comp Tier Target Group	Title of Session	Professional Development Provider
Tuesday June 2 12:00 pm-1:30 pm	Online	HS&N Basic Preschool/ Admin/FCC	Active Supervision	Becky Stewart
Monday June 22 6:00 pm-7:00 pm	Online	CGD/EC Basic All Ages	Ready, Set, Play! A Simple Guide to Exploring the Areas of Curriculum	Melisa Dennison
Tuesday June 23 6:00 pm-8:00 pm	Link CCR&R 2nd Floor	CG&D, F&CR Basic Preschool/	Conflict Resolution and Problem Solving	Becky Stewart
Wednesday June 24 4:00 pm-6:00 pm	Online	COA	A General Overview of Assessments for Early Childcare Professionals	Jessica Wilcoxon



<https://www.vector.com/free-photo/christmas-light-balls>

Module Series, Mini Series, & Workshops

Date & Time of Session	Location of Session	Core Comp Tier Target Age	Title of Session	Professional Development Provider
See Page 13	Link CCR&R 2nd Floor	CGD, FCR, and PL Basic School Age	Foundations for a School Age Early Education Provider	Jessica Wilcoxon
See Page 14	Link CCR&R 2nd Floor	PL and AM Intermediate Directors	Director's Toolbox	Leah McCallister
See Page 16	Link CCR&R 2nd Floor	CGD, FCR, COA, EC, PL Basic Preschool	Developmentally Appropriate Practices In Preschool Module Series	Amber Swindler
See Page 18	Online	EC Basic Preschool	ECERS-3	Amy Willis



WV CHILD CARE CREDENTIAL TRAININGS

2025-2026



JULY 2025	AUGUST 2025	SEPTEMBER 2025
FCCERS-3	Mind in the Making WV ELSF I/T Understanding ACEs: ACEs 101	ITPBIS ITERS-3
OCTOBER 2025	NOVEMBER 2025	DECEMBER 2025
The Growing Brain WVIT II Quality Counts Emergency Preparedness FCCERS-3	Planning Your Professional Growth RR Spreading HOPE WVIT I-R	Utilizing ERS to Achieve Higher Program Quality
JANUARY 2026	FEBRUARY 2026	MARCH 2026
ECERS-3 WV ELSF Preschool WVIT I-R FCCERS-3	FCCPBIS Quality Counts WVEFCCS	ECPBIS Planning Your Professional Growth
APRIL 2026	MAY 2026	JUNE 2026
Utilizing ERS to Achieve Higher Program Quality	The Growing Brain Emergency Preparedness WV ELSF I/T WVIT II The Director's Toolbox	ITERS-3 ECERS-3

Emergency Preparedness in Family Child Care

ARE YOU READY?



**Special training session for Family Child Care Providers!
Come to learn about planning for an emergency in your
home business!**

**Thursday
April 2, 2026
5:30pm-8:00pm
Hamlin-Lincoln County Public Library
7999 Lynn Ave.
Hamlin, WV 25523**

***Emergency Preparedness requires an additional 1 hour
Technical Assistance visit as the proof of learning for the
course.***

**For more information contact:
Amber Swindler
TRAILS Early Childhood Specialist
Amber.L.Swindler@wv.gov**



Foundations for a School Age Early Education Provider Module Series




Each Session is from 12pm-2:30pm in the 2nd Floor Conference Room at Link CCR&R

- Session 1- April 8th NAEYC Professional Standards and NAEYC Code of Ethical Conduct
- Session 2- April 15th Advancing Equity in Early Childhood Education
- Session 3- April 22nd Developmentally Appropriate Practices

Contact Jessica Wilcoxon for more information

 611 7th Ave. Huntington

 304-523-9540 ext. 3442

 Jessica.L.Wilcoxon@wv.gov

Director's Toolbox

A seven week module series for directors and assistant directors.

Session 1: Monday May 4th
Session 2: Monday May 11th
Session 3: Monday May 18th
Session 4: Monday June 1st
Session 5: Monday June 15th
Session 6: Monday June 22nd
Session 7: Monday June 29th

**All sessions are in-person @ Link 9-
IIAM**

Contact Leah McCallister to register.
leah.h.mccallister
(304) 523-3432



Emergency

Preparedness

Training

Training Information:

In this two-hour training session, participants will discuss the different types of emergencies that could happen, learn the importance of planning and preparing for those emergencies, and how to protect children and staff during and after events. Participants will receive support in creating the required emergency preparedness action plan. Following the session, each attendee is required to participate in a one-hour technical assistance visit for which WV STARS credit will be issued.

May 27, 2026 10:00AM-12:00PM

Location:

Link CCR&R

611 7th Ave.

Huntington, WV 25701



Contact: Amy Willis

 304-523-9540 EXT. 3443

 Amy.D.Willis@wv.gov

DEVELOPMENTALLY APPROPRIATE PRACTICE IN PRESCHOOL

1-DAY MODULE SERIES

- Developmentally Appropriate Practice in Preschool Module 1

10:00AM-12:00PM

- Lunch Break
Lunch on your own
12:00PM-12:30PM

- Developmentally Appropriate Practice in Preschool Module 2

12:30PM-2:30PM

When: Saturday, June 6, 2026

Location: Link CCR&R
Huntington Office
2nd Floor Conference Room

Contact: Amber Swindler
TRAILS Early Childhood Specialist
304-528-3480
Amber.L.Swindler@wv.gov



1-hour TA Visit required for Proof of Learning for a total of 5 hours WVSTARS credit.

SUMMER LEARNING SUMMIT

A SAFE Space: Creating a
Supportive, Aware, Focused
and Engaging Summer
Program



For Programs Providing Care to School Age Children

JUNE
9th

Come and join us!

Link CCR&R
611 7th Ave.
Huntington, WV 25701

10am-
4pm



Jessica Wilcoxon
Early Childhood Specialist



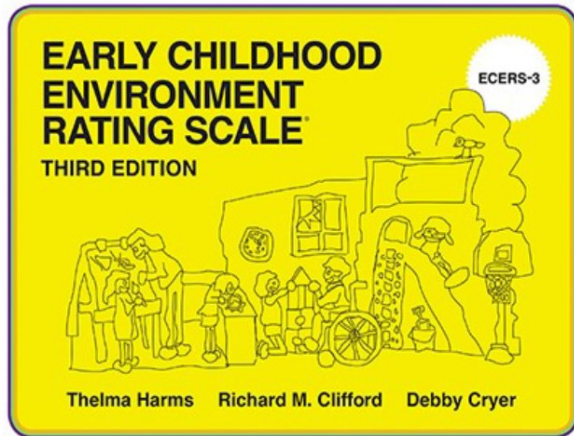
Jessica.L.Wilcoxon@wv.gov



304-523-9540
EXT. 3442

ECERS-3

EARLY CHILDHOOD ENVIRONMENT RATING SCALE



Location: Virtual

Dates:

Monday, June 15, 2026

Tuesday, June 16, 2026

6:30pm to 8:00pm

Optional Technical
Assistance Follow-up

For More Information
Contact:

Amy Willis
Early Childhood Specialist
304-523-9540 Ext: 3443
Amy.D.Willis@wv.gov

This session will analyze and discuss each section of the assessment. We will practice scoring and we will discuss the importance of using this assessment rating scale. Participants will be given the opportunity to take part in activities to help them better understand what to look for when using this assessment tool.



Quality Improvement Specialist Network

LEADERSHIP SUMMIT

Presents: Transform Your Team

Join us for a full-day leadership experience designed for early childhood education program directors who are ready to move their teams forward with clarity, confidence, and consistency. Beth Cannon will walk you through how to fix what is broken and build what truly matters by guiding you through three essential phases: Diagnose the Disconnect, Design the Direction, and Develop a Team That Delivers.

This training, derived from Beth Cannon's book, *Transform Your Team*, is practical, direct, and grounded in the realities of early education. Leaders will leave with tools to clarify expectations, align values with daily behavior, strengthen accountability, and turn the talent they already have into consistent performance.

If you are looking to gain a clear path forward for leading with alignment, ownership, and stability, along with actionable strategies you can implement immediately in your program, this Leadership Summit is for you!

Saturday, April 18, 2026

At 8:30am

30 Shaner Drive

Bridgeport, WV 26330



Beth Cannon

Speaker, Leadership Strategist, Author

Register Now:

Space is limited. Registration deadline - April 3, 2026



Link CCR&R Resource Fair in Mingo County



Link CCR&R will be hosting a resource fair!
This event is open to child care programs and families. There will be many resources to support those who care for young children. It takes a village and we are here to help.



SATURDAY

APRIL 18, 2026



STARTS AT

10:00AM - 12:00PM



LIVING WATER

212E 2ND AVE.
WILLIAMSON, WV 25661

For More Information



<https://www.linkccrr.org/>



304-523-9540



<https://www.facebook.com/linkccrr>



Link CCR&R Resource Fair in Cabell County

Link CCR&R will be hosting a resource fair! This event is open to child care programs and families. There will be many resources to support those who care for young children. It takes a village and we are here to help.



June 13, 2026



10:00 am-12:00 pm



Link CCR&R
611 7th Ave.
Huntington, WV 25701

For More Information:



<https://www.linkccrr.org/>



304-523-9540



<https://www.facebook.com/linkccrr>





Child Care Health Educator

Harmony Vance-Tissenbaum

About Me

Hello!

My name is Harmony Vance-Tissebaum, and I am the Child Care Health Educator for the Link, Connect, and MountainHeart South Regions. I worked in childcare for several years working with children ranging from infancy to school age before becoming a Child Care Health Educator.

This position offers me the opportunity to support and teach Child Care Educators with health, safety, and nutrition in the child care world. If you have any questions, concerns, or are in need of WV STARS registered trainings reach out. I am happy to help!

Thank You!



Contact

Child Care Health Educator
WV Early Childhood Training Connections
and Resources

www.wvearlychildhood.org

- 611 7th Avenue Huntington, WV 25701
- Phone: 304-529-7603 ext. 3437
- Email: hvance@rvcds.org

How Can Early Childhood Health Educators Help You?

- Training – The West Virginia Child Care Health Educators provide trainings that are registered through WV STARS. These trainings can be taken online and in person. We are available to schedule trainings at your convenience and if you are interested in scheduling for your center please give us a call.
- Technical Assistance – If you have any questions or concerns regarding the health or safety of your center, we can provide professional guidance and can be reached through email or phone.



ONLINE TRAININGS

WEST VIRGINIA CHILD CARE HEALTH EDUCATORS

APR
07

IDENTIFYING ENVIRONMENTAL
HAZARDS 1
6:30PM - 8:30PM

APR
08

IDENTIFYING ENVIRONMENTAL
HAZARDS 2
6:30PM - 8:30PM

APR
28

BREASTFEEDING BASICS
6:30PM - 8:30PM

MAY
04

CHILDHOOD OBESITY
12:30PM - 1:30PM

MAY
11

NEW RECIPE IDEAS 1
6:30PM - 8:30PM

MAY
18

NEW RECIPE IDEAS 2
6:30PM - 8:30PM

JUNE
03

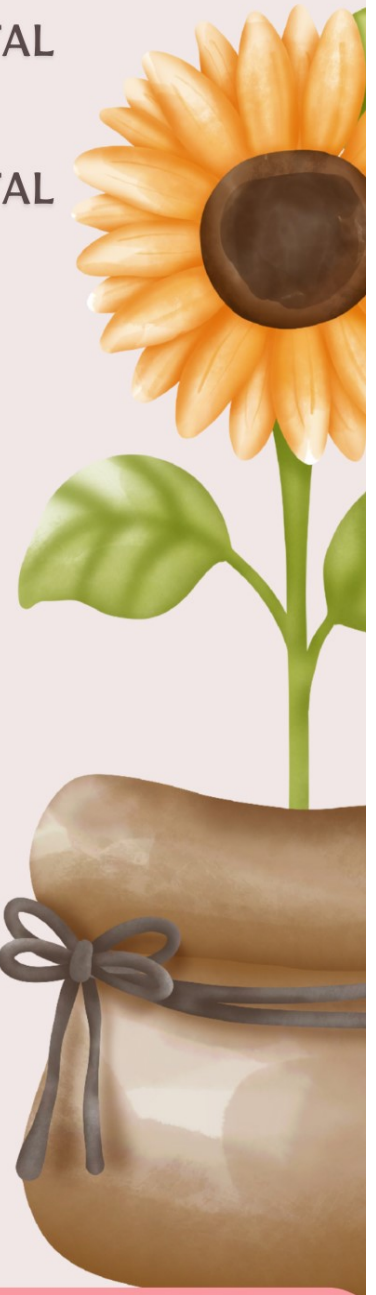
FUN & HEALTHY SNACKS
12:30PM - 1:30PM

JUNE
11

BED BUGS AND BEYOND
6:30PM - 8:30PM

JUNE
23

LET'S MAKE A MENU
6:30PM - 8:30PM



To register go to
www.wvstars.org



Child Care Nurse Health Consultants Trainings April 2026 - June 2026

Date and Time	Training Topic	Trainer
4/2/26 6:00-7:00 PM	Infection Control	Lisa Galford
4/6/26 12:00-1:00 PM	Dealing with Lice	Allison Taylor
Lunchtime Learning 4/6/26 5:30-8:30 PM	Medication Administration	Candace Morgan
4/10/26 6:00-7:30PM	Diabetes in Child Care	Kelly Amos
4/14/26 6:00-7:30 PM	First Aid for Minor Injuries	Candace Morgan
4/27/26 6:00-8:00 PM	Summertime Safety	Brittany Parsons
4/30/26 5:30-8:30 PM	Medication Administration	Allison Taylor
5/4/26 6:00-7:30 PM	Diabetes in Child Care	Kelly Amos
5/5/26 6:00-8:00 PM	Communicable Diseases	Lisa Galford
5/12/26 5:30 PM-8:30 PM	Medication Administration	Kelly Amos
5/16/26 8:00-11:00 AM	Medication Administration	Kelly Amos
Saturday Morning 5/19/26 6:00-7:30 PM	First Aid for Minor Injuries	Candace Morgan
5/21/26 6:00-8:00 PM	Summertime Safety	Brittany Parsons
5/26/26 5:30-8:30 PM	Medication Administration	Lisa Galford
5/27/26 12:00-1:00 PM	Dealing with Lice	Allison Taylor
Lunchtime Learning 6/6/26 9:00-11:00 AM	Summertime Safety	Brittany Parsons
Saturday Morning 6/9/26 5:30-8:30 PM	Medication Administration	Brittany Parsons
6/11/26 12:00-1:00 PM	Dealing with Lice	Allison Taylor
Lunchtime Learning 6/15/26 6:00-7:00 PM	Infection Control	Lisa Galford
6/18/26 6:00-7:30 PM	Diabetes in Child Care	Kelly Amos
6/24/26 6:00-8:00 PM	Summertime Safety	Brittany Parsons
6/25/26 6:00-7:30 PM	First Aid for Minor Injuries	Candace Morgan
6/30/26 5:30-8:30 PM	Medication Administration	Kelly Amos

Child Care Nurse Health Consultants Trainings April 2026 - June 2026

Training Topic	Summary
Communicable Diseases	Tips for minimizing the spread of infection in programs as well as information about common communicable diseases.
First Aid for Minor Injuries	Kids frequently experience bumps, scrapes, and falls during active play/exploration. This presentation includes some basic first aid instructions for those minor injuries as well as when you should seek professional medical treatment.
Diabetes in Child Care	This training includes information from American Diabetes Association Safe at School campaign regarding the basic needs that children with diabetes need throughout the day.
Dealing with Lice	Information about how to identify lice, how to perform a head check, how they are transmitted and treatment options.
Summertime Safety	This training includes information about sun, water, and bug safety.
Medication Administration	Participants will be introduced to safe medication handling and administration practices. This training is required for providers to administer medication to children in the child-care setting.
Infection Control	Basic information about infection control concerns in the childcare setting. Information provided includes hand washing, sanitation and disinfection principles, and universal/standard precautions.

CPR & First Aid Classes

This list of agencies offering First Aid and CPR is made available to you for resource purposes only.
Link CCR&R is not responsible for the following trainings or registration for these trainings.

Boone County: Kanawha Co. Red Cross: Call 340-3650 or www.redcross.org

Cabell County: Vicki Delaney: Call or Text 606-547-6144 or Email paths20@aol.com
American Red Cross: Call 304-526-2900
Cabell County EMS: Contact Lisa Cooper 304-526-9797
Salt Rock Fire Dept.: Call 304-733- 9040
Tammy Zornes Call 304-633-9003
Goodwill Industries of KYOWVA Area, Inc.: Contact Andrea Lupson 304-523-7461 ext.417

Lincoln County: Dorothy or William Frazier: Call 304-778-3873

Logan County: LEASA County Public Rescue: Call 304-752-0917
Logan Regional Medical Center: Contact Cindy Fleming—Education Dept. 304-831-1556

Mason County: Pleasant Valley Hospital: Call 304-675-4340

Putnam County: Active Sports Complex (aka Ayash Center): Contact Scott Nasby 304-741-4079

CPR & FIRST AID CLASSES

Available in Boone, Cabell, Lincoln, Logan,
Mason, Mingo, Putnam and Wayne Counties!



Having First Aid Certification empowers you to provide immediate assistance in emergencies, potentially saving lives before professional help arrives.



YOU'VE GOT TRAILS

Quarterly Tidbits From Your TRAILS Team

How to Teach Positive Self-Talk



Model positive self-talk on a regular basis



Create a list of positive affirmations



Discuss the benefits of positive self-talk

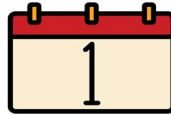
www.thepathway2success.com



Use real-life scenarios to discuss self-talk



Read a positive affirmations list each morning



Reflect on one positive affirmation of the day



Spring Books FOR KIDS



MUD KITCHEN ACTIVITY CARDS



If you've ever thought about creating a mud kitchen for your kiddos, the spring is the perfect time and these activity cards from TRAILS are just the thing the help get you started!



Garden Sensory Tub



www.homeschoolcreations.net

As we head into the final stretch of the school year, it's time to begin preparing for summer break with your school-aged children. Let TRAILS help you with all your summertime fun!

Contact us for more information.

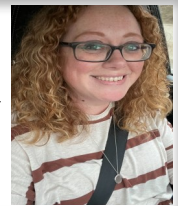
Your TRAILS Team



Melisa Dennison
TRAILS Early Childhood Specialist
Melisa.A.Dennison@wv.gov
304-523-9540 Ext. 3462



Amber Swindler
TRAILS Early Childhood Specialist
Amber.L.Swindler@wv.gov
304-523-9540 Ext. 3480



LINK CCR&R
TRAILS
facts



1

It's ALWAYS FREE

We never ask ANYONE to pay or replace broken, lost, ripped, or damaged items.

2

We make monthly visits

We schedule monthly visits for your county to drop off requested items and pick up current items.

3

TRAILS can be a lesson planning tool

Go to website and search for items to use for future lesson plans. Contact us for log-in information.

4

We offer Training & TA

Contact us for training or support in your environment.

**TO REQUEST TOYS,
BOOKS & OTHER
RESOURCES VISIT
LINK'S WEBSITE OR
SCAN QR CODE:**



HOW TO REQUEST FROM SOUTRON



1

LOG INTO SOUTRON

Log into Soutron using the username and password provided by TRAILS.

2

SEARCH FOR TOYS

Search for toys by either typing in key words or searching by interest area. Bonus tip: You can also filter results by age!

3

CHECK THE BOX

Click the box to the right of the desired item. If item says “1 copy currently available,” then we have it in stock right now!

4

REQUESTING ITEM

Click “Actions” in the left corner, then click “Request.” A new screen will load.

5

ENTER EMAIL

Click “Add address” and enter your email address.

6

COMPLETE REQUEST

Click “Complete Request” in the bottom right corner.

7

YOUR TOYS ARE ON THE WAY!

TRAILS will deliver your requested items (if available) at your next visit!

Quarterly Director's Meeting

April 1st 1:30-2:30PM @ Link

Guest Speaker: Kristin
McColgan Program Coordinator
of Early Childhood & Education
at Mountwest

Register on WV STARS or contact
leah.h.mccallister@wv.gov

For Center & Facility Directors



The West Virginia Breastfeeding Friendly Child Care Designation (BFCCD) offers recognition to child care programs that support breastfeeding mothers. Participating programs will receive support from the Infant/Toddler Coaching Specialists, Child Care Nurse Health Consultants, and Child Care Health Educators to complete the 10 steps of the initiative. Upon completion of the 10 steps, the site will receive a certificate of designation in addition to help with resources and start up.

For more information
please contact:

Claire Culver
Infant Toddler Coaching Specialist
Claire.E.Culver@wv.gov





Important Announcement!



WV STARS Pathway to Earnings

WV STARS is updating how Pathway to Earnings applications are processed beginning with the April 2026 enrollment period. These changes are intended to ensure fairness and consistent distribution of available funding.

What's Changing

- **Denied applications cannot be resubmitted during the same enrollment period.** Denied applicants will be placed on a list in the order their original application was submitted.
- **If funding remains** at the end of the enrollment period, WV STARS will begin contacting denied applicants – following the original submission order- to allow them an opportunity to submit a corrected application.
- Applicants contacted during this phase will have **72 hours** to fix errors and resubmit all required documentation.
- This process will continue until **all funds are depleted**. WV STARS will notify all denied applicants once funding is exhausted.

What This Means for Applicants

- **Submit a fully complete application the first time.**
Double check that the application is signed, that you have submitted the right documentation, and that your renewal requirements have been met.
- **If your application is denied, prepare your corrections immediately.**
Review your denial email carefully so you can resolve any issues and be ready if you receive a chance to resubmit. Review Pathway to Earnings resources, how-to guides, and checklists for additional guidance.
- **If contacted to resubmit your application, act fast!**
You have just 72 hours to submit a completed application and documentation. Failing to respond will forfeit the opportunity and you will need to wait until the next enrollment period.
- **Denied applicants will be contacted once funds are fully depleted.**
At this point, all denied applicants will be eligible to reapply during the next enrollment period.

Additional Help

A step-by-step photo how-to guide and example documentation are already available at www.wvstars.org/earnings, and WV STARS will release additional resources in the coming weeks.

West Virginia State Training and Registry System
611 7th Ave, Suite 322 Huntington, WV 25701 * Phone: (304) 522-7827 or (855) 822-STAR * Fax: (304) 529-2535 www.wvstars.org * Email: scholarship@rvcds.org
This program is being presented with financial assistance as a grant from the West Virginia Department of Human Services and is administered by WV Early Childhood Training Connections and Resources, a program of River Valley Child Development Services



RIVER VALLEY CHILD
DEVELOPMENT
SERVICES



ACDS REGISTRATION

ABOUT ACDS

ACDS is a four semester apprenticeship program for individuals working directly with children birth to twelve for a minimum of 20 hours a week. Classes are one evening a week for 15 weeks. Virtual classes are available for counties that do not offer an in-person option.

PARTICIPATION

Registration for fall terms start June 1 and for spring terms November 1. Interested participants should follow the outlined steps to register for class each term.

REGISTRATION



STEP ONE

Visit the WV STARS training calendar and search self-paced courses for all ACDS orientations. Complete the orientation that corresponds to the semester being entered.



STEP TWO

Complete and email the registration form that is linked with each orientation. It is also available on the ACDS website, wvacds.org.



STEP THREE

Submit a \$25.00 registration fee to the ACDS program. Card payments are now ran by the participant. The link and QR code for payments is on the ACDS website, www.wvacds.org.



304-523-0433



www.wvacds.org



wvacds@rvcds.org

FOOD REIMBURSEMENT



For information about enrolling in the Family Child Care Food Program to help with the costs of meals and snacks you serve the children in your care, please contact the following agency:



Central Child Care

Serving Boone & Logan Counties
(304) 382-0797

River Valley Family Child Care Food Program

Serving Cabell, Lincoln, Mason, Mingo,
Putnam & Wayne Counties
(304) 523-3417 ext.3446 or 1-304-751-5253

In accordance with Federal law and U.S. Department of Agriculture (USDA) policy, this institution is prohibited from discriminating on the basis of race, color, national origin, sex, age, or disability. To file a complaint alleging discrimination, write USDA, Director, Office of Civil Rights, 1400 Independence Avenue SW, Washington, DC 20250-9410 or call, toll free, (866) 632-9992 (Voice). Individuals who are deaf, hard of hearing or have speech disabilities may contact USDA through the Federal Relay at (800) 877-8339 or (800) 845-6136 (Spanish). USDA is an equal opportunity provider. and employer.

Kid's Healthy Eating Plate



© 2015, Harvard T.H. Chan School of Public Health

CABELL/WAYNE FAMILY CHILD CARE ASSOCIATION



The Cabell Wayne Family Child Care Association would like to invite ALL providers from ALL counties to join. If you have any questions, feel free to call or text Kathy Baker, President, at 304-638-7578, or email her at mrskathys@comcast.net so you can start receiving information about the Association and other helpful information. They would like to have all providers' email addresses, so please email Kathy at the address above to be added to the listserv. They hope to see lots of new providers at the meetings.



Are you interested in making \$6 more per child per day???? If so, contact Kathy Baker at 304-638-7578 or email at mrskathys@comcast.net for more details.

WELCOME to our **Business Corner**

Child Care Provider Billing

Make sure you are filling out your request for payment form and attendance sheets correctly.

- Request for payment forms **MUST reflect actual days of attendance for ALL children** reflecting part and full day attendance. The CCR&R will automatically pay billable days for children who are eligible.
- Do NOT write “COVID” or “pay by enrollment” on attendance (sign in/out) sheets.
- All attendance sheets must accurately reflect child attendance including parent/guardian signatures.
- Digital attendance sheets, primarily used by centers, must be signed by the parent/guardian at the end of the month.

Per the Division of ECE, attendance sheets for ALL CHILDREN must be submitted each month beginning December 1, 2025 (November billing).

Review your Provider Services Agreement for clarification on additional allowable fees.

If you need a payment training refresher, please reach out to us.



If you would like more information, contact
Cristie Dunbar, Link CCR&R Director at
304-528-3406 or Cristie.R.Dunbar@wv.gov

**LINK CHILD CARE
RESOURCE &
REFERRAL**

Link Child Care Resource & Referral is a program of River Valley Child Development Services, Inc. and is being presented with financial assistance as a grant from the West Virginia Department of Human Services.

Visit us on the web:
www.linkccrr.org or
www.rvcds.org

COME SEE US!



Link Office

611 7th Ave.
Huntington, WV 25701
(800) 894-9540 or
(304) 523-9540
(304) 697-4821 FAX

**Link Child Care
Resource &
Referral**
611 7th Avenue
Huntington, WV 25701



www.facebook.com/

