

NewsLink

A NEWSLETTER OF LINK CHILD CARE RESOURCE & REFERRAL



OCTOBER.NOVEMBER.DECEMBER 2025

As we move into the vibrant and bustling months of October, November, and December, child care providers face the exciting challenge of keeping children engaged, safe, and joyful throughout the holiday season. From Halloween thrills and autumn crafts to Thanksgiving gratitude and festive winter celebrations, this time of year is filled with opportunities to create memorable, nurturing experiences for the children in your care.

With changing routines, increased energy, and the anticipation of family gatherings, it's essential to provide a calm, supportive environment where every child feels secure and included. Staying mindful of each child's needs and maintaining consistency can make all the difference during this busy time, and your Link Professional Development Training Team is here to support you every step of the way. Whether you need guidance on seasonal curriculum ideas, behavior management strategies, or resources to enhance your fall and winter programming, don't hesitate to reach out. Together, we can make this holiday season a joyful, enriching experience for both you and the children in your care.



https://stock.adobe.com/search?filters%3Bcontent_type%3Aphoto%3A

INSIDE THIS ISSUE:

Link CCR&R PDTT	2
PD Session Descriptions	4
PD Schedule	8
WV Child Care Credential Training Schedule	12
The Growing Brain	13
WVIT II	14
Family Child Care Saturday	15
WVIT I-R	16
Foundations Series	17
Loose Parts Play	18
Building a Firm Foundation ...	19
Health & Safety Sessions	20
First Aid & CPR	21
You've Got TRAILS	22
How to Use Soutron	24
Link Programs & Partners	25
Link Business Corner	33
Congratulations	34
Link CCR&R Information	35

LINK CCR&R

PROFESSIONAL DEVELOPMENT TRAINING TEAM

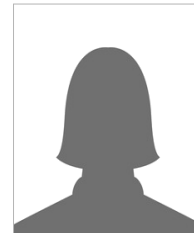
Cristie Dunbar

Link CCR&R Director
Cristie.R.Dunbar@wv.gov



Now Hiring

PD Supervisor
Open Position



Samantha Davenport

Infant Toddler Coaching Specialist
Samantha.D.Davenport@wv.gov



Erin Ritchie

Child Care Coaching Specialist
Erin.A.Ritchie@wv.gov



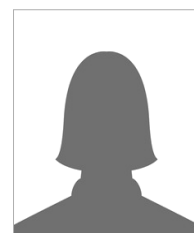
Becky Stewart

Behavioral Consultant
Rebecca.L.Stewart@wv.gov



Now Hiring

Behavioral Consultant
Open Position



Amy Willis

Early Childhood Specialist
Amy.D.Willis@wv.gov



Jessica Wilcoxon

Early Childhood Specialist
Jessica.L.Wilcoxon@wv.gov



Claire Culver

Infant Toddler Specialist
Claire.E.Culver@wv.gov



Brian Hayton

Infant Toddler Specialist
Brian.E.Hayton@wv.gov



Melisa Dennison

Early Childhood Specialist-TRAILS
Melisa.A.Dennison@wv.gov



Amber Swindler

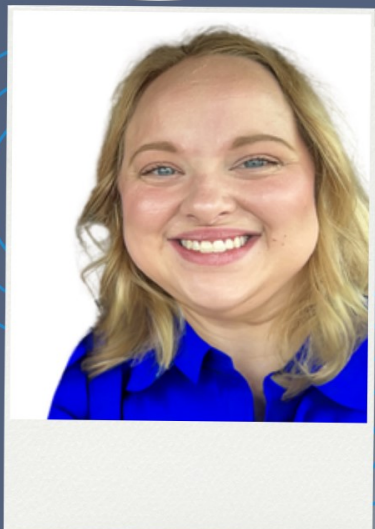
Early Childhood Specialist-TRAILS
Amber.L.Swindler@wv.gov



Leah McCallister

Quality Improvement Specialist
Leah.H.McCallister@wv.gov





Welcome TO THE TEAM!

LEAH MCCALLISTER

**QUALITY IMPROVEMENT
SPECIALIST**

HI! MY NAME IS LEAH MCCALLISTER. I WAS BORN AND GREW UP IN DAYTON, OHIO AND THAT IS STILL WHERE MY FAMILY LIVES. I THEN MOVED TO CAMBRIDGE, OHIO TO FINISH MY DEGREE AND LIVED THERE FOR TWO YEARS. I EARNED MY BACHELOR'S DEGREE IN EARLY CHILDHOOD EDUCATION FROM MUSKINGUM UNIVERSITY WITH A MINOR IN SOCIOLOGY. WHILE I WAS FINISHING MY DEGREE, I MET MY NOW HUSBAND WILLIAM MCCALLISTER AND HE TOLD ME ALL ABOUT THE WONDERFUL AREA OF HUNTINGTON, MARSHALL FOOTBALL, AND HIS FAMILY. THROUGHOUT DATING I TRAVELED HERE AND SAW FOR MYSELF THE TRUE WONDERS OF THIS CITY AND FELL IN LOVE WITH MARSHALL MYSELF. AFTER FINISHING MY DEGREE, WILL AND I GOT MARRIED, I MOVED DOWN HERE, AND STARTED LOOKING FOR A JOB. I WAS HIRED AT MARSHALL UNIVERSITY'S CHILD DEVELOPMENT ACADEMY AS A LEAD TEACHER IN ONE OF THE PRESCHOOL ROOMS. WHILE WORKING THERE I HEARD SO MANY WONDERFUL THINGS ABOUT LINK, HOW HELPFUL THEY WERE, AND ABOUT THE RESOURCES THEY PROVIDE. I BEGAN LOOKING FOR OTHER CAREER OPPORTUNITIES AND SAW THE JOB POSTING FOR THE QUALITY IMPROVEMENT SPECIALIST AND APPLIED. I AM VERY EXCITED TO BE WORKING WITH THIS AMAZING TEAM AND RESOURCE FOR OUR COMMUNITY!

Leah.H.McCallister@wv.gov

Descriptions of Professional Development Sessions

Active Play: The Importance of Movement in Early Childhood

This session will focus on the importance of movement for young children, both indoors and outdoors, with active play strategies to incorporate into your daily routines.

Appropriate Use of Technology

This training will look at ways that early education programs can appropriately integrate the use of technology in the learning environment. We will also go over strategies to keep children safe online.

Building a Firm Foundation with TRAILS One Block at a Time

In this series for family childcare providers, participants will receive an overview of the West Virginia Elements of Family Child Care Series. There are four 1-hour sessions that discuss how children grow, organizing a program, how children learn, and building relationships. ***There are technical assistance visits in addition to the sessions to support learning.**

Classroom Management

This training will provide five components of classroom management and review each component. We will also discuss different strategies to create an atmosphere that encourages a positive learning environment.

Conflict Resolution and Problem Solving

Participants will be introduced to the definition of conflict from a child's perspective. We will discuss various struggles occurring in the classroom and problem-solving strategies to assist with classroom conflicts.

Container Baby Syndrome

This training explores the effects of Container Baby Syndrome with a focus on the adverse developmental impacts it has on infants. Infant Toddler caregivers will learn about restrictive equipment, developmental delays to look for, and how to prevent the overuse of containers.

Coping: Young Children and Emotional Distress-Why and How to Help

Emotional distress in young children may appear differently than it does in adults. Identifying the typical emotional development of young children and the stressors they may face, this training outlines how stress reactions look in early childhood. Coping strategies which can be implemented to assist children and the adults caring for them will be highlighted.



Descriptions of Professional Development Sessions

Emergency Preparedness for Centers/Facilities

Participants will discuss the different types of emergencies that could happen, learn the importance of planning and preparing for those emergencies, and how to protect children and staff during and after events. **There is a one-hour TA visit required to receive full credit.**

Expectations and Guidance Versus Rules and Punishments

When faced with challenging behavior in an early childhood classroom, the first instinct is to enact rules and punishments. The approach of teaching expectations and providing positive guidance offers an alternative to the frustration of the rule and punishment cycle. We will look at the expectation and positive guidance approach for prevention of challenging behaviors in the early childhood classroom. Strategies for teaching engagement and pro-social skills will be covered along with methods to determine the functions of challenging behaviors.

Family Child Care Emergency Preparedness

This session will provide guidance to WV Family Child Care providers (FCC) and WV Family Child Care facilities on how to respond to disasters that may affect them. The provider will receive information on how to become prepared for different types of emergencies using documents required by the WV Department of Human Services which focus on an ongoing cycle that includes four phases: Mitigation, Preparedness, Response, and Recovery. **There is a required 1-hour TA visit that participants must complete as part of the course.**

Foundations for a School Age Early Education Provider

This series is based on information from the National Association for the Education of Young Children, also known as NAEYC. NAEYC is the leading national accrediting body for early education programs. Each session will focus on the NAEYC Foundational Documents (Professional Standards for Early Educators, Code of Ethical Conduct, Advancing Equity in Early Education, and Developmentally Appropriate Practices). This mini module series will examine how programs that provide care to school age children can strengthen their foundation of care.

From Milestones to Stepping Stones: Knowing is Half the Battle!

This session will give participants a better understanding of child development. Discussions will include an overview of developmental milestones and the importance and benefits of tracking them. Having a strong understanding of what children should be doing at each developmental stage is helpful to children, their parents, and their childcare providers.



<https://www.istockphoto.com/search/2/image-films>

Descriptions of Professional Development Sessions

It's All about Emotions: Promoting Social-Emotional Development for School Readiness and Challenging Behavior Prevention

Social Emotional Competence is often overlooked as a critical school readiness skill. Preschool children with age-appropriate or advanced social-emotional skills usually have an easier transition to kindergarten and fewer challenging behaviors. This training examines the essential social-emotional skills to be taught to promote school readiness and limit challenging behaviors. Resources available to teach these skills will be identified.

Language and Literacy: Using Books as More than Just Fillers

This session will give participants a better understanding of language and literacy are and their importance and benefits to academic success and challenges. Emergent literacy, literacy rich environments and parental assistance at home will also be discussed.

A follow-up one-hour technical assistance visit is required to complete this course.

Planning Your Professional Growth

This training goes over professional development, your growth as a professional, and how this relates to quality childcare.

Quality Counts

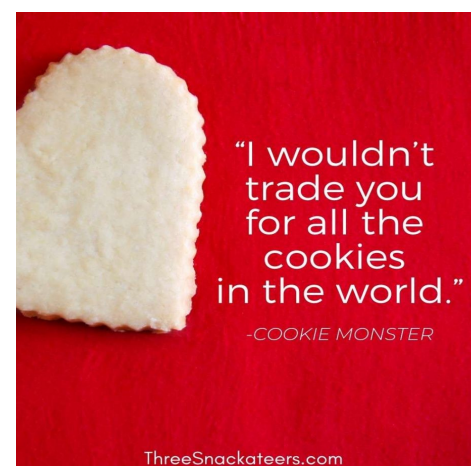
In this training we will discuss quality, why it matters, and how it is measured. We will examine program supports that are necessary to achieve and maintain quality childcare and we will review the importance of early childhood educators.

Quality Environments FCCERS-3 Overview

This session is geared towards family childcare providers. Participants will learn how the Family Child Care Environment Rating Scale assessment is used in an in-home childcare setting. Participants will gain a basic understanding of the scale, understand the terms and concepts used throughout the scale, and participants will practice scoring items.

Relationship Building: The Key to Success

This training will discuss strategies to help early education professionals to build strong, nurturing, and positive relationships with the preschool and school aged children in their programs.



Descriptions of Professional Development Sessions

RR Spreading HOPE

The HOPE training will cover the effects of ACEs on health outcomes, the importance of positive childhood experiences, and the research showing their mitigating effects on ACEs as well as the biologic basis for these effects. We will introduce the four building blocks of HOPE and discuss type 1 vs. type 2 thinking. This session will present some ideas of how to incorporate the HOPE Framework into practice.

Sensory Processing Difficulties and the Impact on Classroom Behavior

Participants will be introduced to the eight sensory systems humans use to learn about the world. We will look at how difficulties with these sensory systems can impact child behavior in a classroom setting. Examples of classroom and instructional adaptations and modification to help children with sensory difficulties succeed in a classroom setting will be provided. Also, participants will be given an opportunity to brainstorm additional strategies to meet the unique sensory needs of the children in their care.

Social and Emotional Development & It's Lasting Impact on a Child's Life: A Dive into the Benefits of Teaching Social and Emotional Skills

In this training we will be discussing social and emotional development; what it is, what it looks like in early childhood education classrooms, and its long-term benefits.

Social Emotional Development & Dramatic Play

This training will discuss milestones, social skills, the different types of dramatic play, and the social-emotional development and skills that can be observed during play.

The Growing Brain

The crucial development of the growing brain is one of the most important topics in early childhood development. Research on the topic is exploding, underscoring the need for early childhood professionals to stay up to date on brain development and strategies to best support the growing brains of children, ages birth to 5 years old, in their care.

The Importance of Family Style Dining in Preschool

Is family style dining something that gets overlooked in your preschool classroom? Do you have a hard time implementing it during mealtimes? In this training session, we will discuss the challenges and benefits of family style dining, how to start incorporating it, and review ideas to support learning activities during mealtimes.

Utilizing the Environment Rating Scale to Achieve Higher Program Quality

This training is an overview of the different Environment Rating Scales, their scoring systems and how to use the information to enhance your program's quality.

WVI/T I-R Professional Development Program: Caregiver Modules

Professional development is an ongoing process. Trainers and administrators work together to monitor the personal and professional growth of infant/toddler caregivers and help to develop a plan that responds directly to the needs of the children in their care.

WVIT II Caregiver Relationship Based Care

West Virginia Infant Toddler Professional Development Caregiver Training II is a module series that lasts for ten weeks. This training is designed to provide information about relationship building between caregivers, infants, toddlers, and parents.



"You're never too old to play in the leaves."
~ Unknown



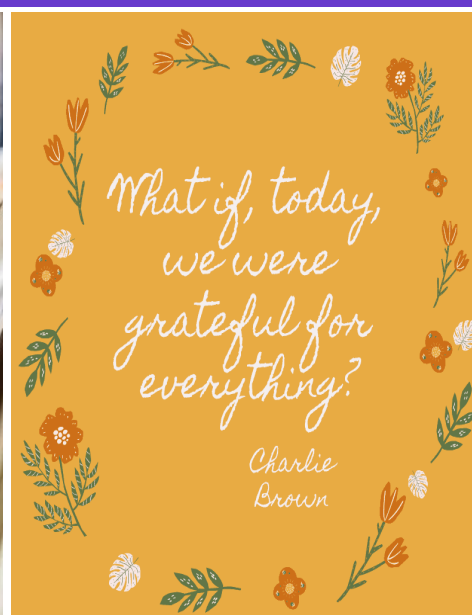
October

DATE & TIME OF SESSION	LOCATION OF SESSION	CORE COMP TIER TARGET AGE	TITLE OF SESSION	PROFESSIONAL DEVELOPMENT PROVIDER
Tuesday October 7th 6:30pm to 8:30pm	Online	CGD, FCR, EC Basic PK, Admin	Expectations and Guidance Versus Rules and Punishments	Becky Stewart
Wednesday October 8th 1:00pm to 2:00pm	Online	PL Basic All Ages	Quality Counts	Leah McCallister
Wednesday October 8th 4:00pm to 6:00pm	Link CCR&R 2nd Floor	HSN Basic All Ages	Emergency Preparedness for Centers/Facilities	Jessica Wilcoxon
Wednesday October 15th 1:00pm to 2:00pm	Online	EC Intermediate PK	Classroom Management	Erin Ritchie
Tuesday October 21st 4:00pm to 6:00pm	Link CCR&R 2nd Floor	EC Basic PK, SA	Appropriate Use of Technology	Jessica Wilcoxon
Tuesday October 28th 12:00pm to 2:00pm	Online	CGD, EC Basic PK, Admin	It's All about Emotions: Promoting Social-Emotional Development for School Readiness and Challenging Behavior Prevention	Becky Stewart



November

DATE & TIME OF SESSION	LOCATION OF SESSION	CORE COMP TIER TARGET AGE	TITLE OF SESSION	PROFESSIONAL DEVELOPMENT PROVIDER
Thursday November 6th 1:00pm to 3:00pm	Online	CGD, COA, EC, HSN Basic I/T	Container Baby Syndrome	Claire Culver
Thursday November 6th 6:30pm to 8:00pm	Online	CGD, FCR Basic All Ages	RR Spreading HOPE	Becky Stewart
Thursday November 6th 6:30pm to 8:30pm	Online	CGD Basic PK	From Milestones to Stepping Stones: Knowing is Half the Battle!	Amy Willis
Wednesday November 12th 1:00pm to 2:00pm	Link CCR&R 2nd Floor	EC, PL Basic PK	Classroom Management	Erin Ritchie
Wednesday November 12th 1:00pm to 3:00pm	Online	PL, AM Basic All Ages	Planning Your Professional Growth	Leah McCallister
Monday November 17th 1:00pm to 3:00pm	Online	CGD, EC Basic All Ages	Social and Emotional Development & It's Lasting Impact on a Child's Life. A Dive Into the Benefits of Teaching Social and Emotional Skills	Leah McCallister
Wednesday November 19th 12:00pm to 2:00pm	Link CCR&R 1st Floor	CGD, FCR Basic PK, FCC, Admin	Conflict Resolution and Problem Solving	Becky Stewart



December

DATE & TIME OF SESSION	LOCATION OF SESSION	CORE COMP TIER TARGET AGE	TITLE OF SESSION	PROFESSIONAL DEVELOPMENT PROVIDER
Thursday December 4th 1:00pm to 3:00pm	Online	CGD, EC Basic PK	Social Emotional Development & Dramatic Play	Amy Willis
Tuesday December 9th 5:00pm to 7:00pm	Link CCR&R 2nd Floor	CGD Basic PK, SA	Relationship Building: The Key to Success	Jessica Wilcoxon
Wednesday December 10th 1:00pm to 2:00pm	Link CCR&R 2nd Floor	EC, PL Basic PK	Classroom Management	Erin Ritchie
Wednesday December 10th 1:00pm to 3:00pm	Online	EC Basic PK	Utilizing the Environment Rating Scale to Achieve Higher Program Quality	Leah McCallister
Thursday December 11th 6:00pm to 8:00pm	Link CCR&R 2nd Floor	CGD, EC Basic PK, FCC, Admin	Sensory Processing Difficulties and the Impact on Classroom Behavior	Becky Stewart
Monday December 15th 6:00pm to 7:00pm	Online	CGD, EC Basic All Ages	Active Play: The Importance of Movement in Early Childhood	Melisa Dennison
Tuesday December 16th 6:00pm to 8:00pm	Online	CGD, EC, HSN Basic All Ages	The Importance of Family Style Dining in Preschool	Amber Swindler
Thursday December 18th 12:00pm to 2:00pm	Online	CGD, HSN Basic PK	Coping: Young Children and Emotional Distress	Becky Stewart
Thursday December 18th 6:30pm to 7:30pm	Online	CGD Basic PK	Language & Literacy: Using Books as More Than Just Fillers	Amy Willis

Let
THERE BE
PEACE
ON
Earth



<https://www.vecteezy.com/free-photos/christmas-lights-baby>

Module Series, Mini Series, & Workshops

DATE & TIME OF SESSION	LOCATION OF SESSION	CORE COMP TIER TARGET AGE	TITLE OF SESSION	PROFESSIONAL DEVELOPMENT PROVIDER
See Page 13	Living Water Child Care	CGD, FCR, EC, HSN Basic All Ages	The Growing Brain	Amy Willis
See Page 14	Link CCR&R 1st Floor	CGD Advanced I/T	WVIT II Caregiver Relationship Based Care	Claire Culver
See Page 15	Link CCR&R 1st Floor	HSN, PL, AM EC, CGD Basic FCC	"Special Event" Family Child Care Saturday	Amber Swindler Samantha Davenport Melisa Dennison
See Page 16	Link CCR&R 2nd Floor	CGD, FCR, EC, HSN, PL, AM Basic I/T	WVI/T I-R Professional Development Program: Caregiver Modules	Brian Hayton
See Page 17	Link CCR&R 2nd Floor	CGD, FCR, PL Basic SA	Foundations for a School Age Early Education Provider	Jessica Wilcoxon
See Page 18	Forrest Burdette COM	CGD, EC, HSN Basic All Ages	Loose Parts Play: The What, Why and How Module Series	Melisa Dennison
See Page 19	TBD	CGD Basic All Ages	Building a Firm Foundation with TRAILS: One Block at a Time	Melisa Dennison Amber Swindler





WV CHILD CARE CREDENTIAL TRAININGS 2025-2026



JULY 2025	AUGUST 2025	SEPTEMBER 2025
FCCERS-3	Mind in the Making WV ELSF I/T Understanding ACEs: ACEs 101	ITPBIS ITERS-3
OCTOBER 2025	NOVEMBER 2025	DECEMBER 2025
The Growing Brain WVIT II Quality Counts Emergency Preparedness FCCERS-3	Planning Your Professional Growth RR Spreading HOPE WVIT I-R	Utilizing ERS to Achieve Higher Program Quality
JANUARY 2026	FEBRUARY 2026	MARCH 2026
ECERS-3 WV ELSF Preschool WVIT I-R FCCERS-3	FCCPBIS Quality Counts WVEFCCS	ECPBIS Planning Your Professional Growth
APRIL 2026	MAY 2026	JUNE 2026
Utilizing ERS to Achieve Higher Program Quality	The Growing Brain Emergency Preparedness WV ELSF I/T WVIT II The Director's Toolbox	ITERS-3 ECERS-3



“Winter is not a season, it’s a celebration.”
~ Anamika Mishra



The Growing Brain: From Birth to 5 Years Old

Professional Development for Early Childhood Professionals

Decades of research indicate that the early years of life are a period of exponential brain development, characterized by great opportunity and vulnerability dependent on the child's relationships and environment.

The Growing Brain: From Birth to 5 Years Old is an innovative professional development opportunity that provides a toolkit of how the brain develops, along with ways you can encourage healthy brain development in children from birth to 5 years old.

Participants will develop skills and strategies to:

- understand the architecture and neurobiology of brain development
- support language, cognition, prosocial behavior, and social-emotional development
- reduce toxic stress that can negatively influence brain development of very young children

For more information, visit
www.zerotothree.org/growingbrain.



Make Plans Today

What	The Growing Brain
When	Tuesdays October 7th - November 18th 5:15pm-8:15pm
Where	Living Water Child Care 212 Second Ave Williamson, WV 25661

Hosted By



Amy Willis Early Childhood
Specialist Link CCR&R
Amy.D.Willis@wv.gov
304-523-9540 ext. 3443



The Growing Brain: From Birth to 5 Years Old is brought to you by ZERO TO THREE Professional Development and Workforce Innovations. PDWI aims to elevate the knowledge, skills, and abilities of the early childhood development field.

For additional professional development resources and trainings, visit
www.zerotothree.org/PDWI.



WVIT II:

RELATIONSHIP BASED CARE

Session 1	Tuesday, Oct 14th	12:00-3:30 pm
Session 2	Tuesday, Oct 21st	12:00-3:30 pm
Session 3	Tuesday, Oct 28th	12:00-3:30 pm
Session 4	Tuesday, Nov 4th	12:00-3:30 pm
Session 5	MONDAY, Nov 10 th	12:00-3:30 pm
Session 6	Tuesday, Nov 18th	12:00-3:30 pm
Session 7	Tuesday, Nov 25th	12:00-3:30 pm
Session 8	Tuesday, Dec 2nd	12:00-3:30 pm
Session 9	Tuesday, Dec 9th	12:00-3:30 pm
Session 10	Tuesday, Dec 16th	12:00-3:30 pm

This course will be held virtually on Zoom. Please note that Session 5 will be on a MONDAY.

For More Information, Please Contact:

Claire Culver
Infant Toddler Specialist
Claire.E.Culver@wv.gov

****Special Event**** **Family Child Care** **Saturday**



OCTOBER 18



2025

10:00 AM-12:30 PM

FAMILY CHILD CARE EMERGENCY PREPAREDNESS

Are you ready for an emergency? Discover how to ensure your family child care home is prepared for an emergency and learn the newest requirements from West Virginia.

1:30 PM-3:30 PM

QUALITY ENVIRONMENTS: FCCERS-3

Using the Family Child Care Environmental Rating Scale-3, we will examine the characteristics of a quality environment.

10:00 AM-3:30 PM

LOOSE PARTS PLAY DATE

Bring your children to enjoy a loose parts play date with Melisa Dennison while attending the FCC training sessions.

@

LINK CCR&R CABELL COUNTY
611 7TH AVE. HUNTINGTON, WV

**For more information or to
register contact your TRIP Team:**

- Lunch will be provided from 12:30pm-1:30pm at the play date.
- Emergency Preparedness has a required 1-hour TA Visit that will be scheduled after session.
- If participants attend all sessions & TA visit they will receive 6.5 hours WV STARS credit.

Samantha Davenport
Infant/Toddler Coaching Specialist
Samantha.D.Davenport@wv.gov

Melisa Dennison
Early Childhood Specialist TRAILS
Melisa.A.Dennison@wv.gov

Amber Swindler
Early Childhood Specialist TRAILS
Amber.L.Swindler@wv.gov



Session 1	Tuesday November 4th	Link Office: 1:00pm-4:30pm
Session 2	Tuesday November 18th	Link Office: 1:00pm-4:30pm
Session 3	Tuesday November 25th	Link Office: 1:00pm-4:30pm
Session 4	Tuesday December 2nd	Link Office: 1:00pm-4:30pm
Session 5	Tuesday December 9th	Link Office: 1:00pm-4:30pm



For more information, please contact:
Brian Hayton, Infant Toddler Specialist
brian.e.hayton@wv.gov

TACIT VISITS

Session 6	Tuesday December 30th	Link Office: 1:00pm-4:30pm
Session 7	Tuesday January 6th	Link Office: 1:00pm-4:30pm
Session 8	Tuesday January 13th	Link Office: 1:00pm-4:30pm
Session 9	Tuesday January 20th	Link Office: 1:00pm-4:30pm
Session 10	Tuesday January 27th	Link Office: 1:00pm-4:30pm
Session 11	Tuesday February 3rd	Link Office: 1:00pm-4:30pm
Session 12	Tuesday February 10th	Link Office: 1:00pm-4:30pm

TACIT VISITS

PLEASE NOTE:

SESSIONS WILL BE HELD IN
PERSON AT THE LINK OFFICE
611 7TH AVENUE,
HUNTINGTON

SESSIONS 1, 5, AND 12 ARE
MANDATORY

NO CLASS ON:
11/11/25



Foundations for a School Age Early Education Provider Module Series



Each Session is from 10am-12:30pm
in the 2nd Floor Conference Room at
Link CCR&R

- Session 1- Nov. 6th NAEYC Professional Standards and NAEYC Code of Ethical Conduct
- Session 2- Nov. 13th Advancing Equity in Early Childhood Education
- Session 3- Nov. 20th Developmentally Appropriate Practices

**Contact Jessica
Wilcoxon for more
information**

📍 611 7th Ave. Huntington

📞 304-523-9540
ext. 3442

✉ Jessica.L.Wilcoxon@wv.gov

Loose Parts Play

The What, Why & How

Module Series

In this 5-part series, participants will learn **WHAT** loose parts play is, **WHY** it is important and its benefits, as well as **HOW** to implement it for the children in their care.

Training Dates

Module 1— Thursday, November 13

Module 2— Thursday, November 20

Module 3— Thursday, December 4

Module 4— Thursday, December 11

Module 5— Thursday, December 18



For more information,
or to sign up, contact:

Melisa Dennison
Early Childhood Specialist—
TRAILS
304-523-9540 Ext. 3462
Melisa.A.Dennison@wv.gov
Amber Swindler
Early Childhood Specialist—
TRAILS
304-523-9540 Ext. 3480
Amber.L.Swindler@wv.gov

All Sessions will be held at

Forrest Burdette Preschool

2828 Putnam Avenue

Hurricane, WV 25526

All Sessions will be from 6:00-8:00 pm.



Building a Firm Foundation with TRAILS: One Block at a Time

Module 1:

How Children Grow

Module 2:

Organizing Your Home & Day

Module 3:

How Children Learn

Module 4:

Building Positive Relationships



Contact TRAILS today for more information!

Melisa Dennison
Early Childhood Specialist-TRAILS
Melisa.A.Dennison@wv.gov
304-528-3462

Amber Swindler
Early Childhood Specialist-TRAILS
Amber.L.Swindler@wv.gov
304-528-3480

Online Trainings

October 2025 - December 2025

Date and Time	Training Topic	Trainer
10/2/25 5:30-8:30 PM	Medication Administration	Candace Morgan
10/6/25 6:00-7:00 PM	Respiratory Infections	Lisa Galford
10/9/25 6:30-8:00 PM	Diabetes in Child Care	Candace Morgan
10/15/25 5:30-8:30PM	Medication Administration	Brittany Parsons
10/16/25 6:00-8:00 PM	Communicable Diseases	Candace Morgan
10/20/25 6:00-7:00 PM	Dealing with Lice	Kelly Amos
10/24/25 12:00-1:00 PM Lunchtime Learning	Morning Health Checks	Allison Taylor
10/27/25 6:00-7:00 PM	Infection Control	Brittany Parsons
10/29/25 9:00 AM-12:00 PM Early Session	Medication Administration	Allison Taylor
11/4/25 6:00-7:00 PM	Respiratory Infections	Lisa Galford
11/5/25 6:00-7:30 PM	Diabetes in Child Care	Candace Morgan
Date to be Announced 8:00 AM-3:00 PM Super Saturday	We are planning an entire day of online learning. Watch your inbox for details	TBD
11/12/25 6:00-7:00 PM	Dealing with Lice	Kelly Amos
11/14/25 12:00-1:00 PM Lunchtime Learning	Morning Health Checks	Allison Taylor
11/18/25 5:30-8:30 PM	Medication Administration	Lisa Galford
11/20/25 6:00-7:00 PM	Infection Control	Brittany Parsons
12/1/25 6:00-7:30 PM	Diabetes in Child Care	Candace Morgan
12/3/25 6:00-7:00 PM	Dealing with Lice	Kelly Amos
12/4/25 5:30-8:30 PM	Medication Administration	Allison Taylor
12/8/25 12:00-1:00 PM Lunchtime Learning	Respiratory Infections	Lisa Galford
12/9/25 6:00-8:00 PM	Communicable Diseases	Candace Morgan
12/10/25 12:00-1:00 PM Lunchtime Learning	Morning Health Checks	Allison Taylor
12/16/25 5:30-8:30 PM	Medication Administration	Kelly Amos
12/18/25 6:00-7:00 PM	Infection Control	Brittany Parsons

CPR & First Aid Classes

This list of agencies offering First Aid and CPR is made available to you for resource purposes only.

Link CCR&R is not responsible for the following trainings or registration for these trainings.

Boone County: Kanawha Co. Red Cross: Call 340-3650 or www.redcross.org

Cabell County: Vicki Delaney: Call or Text 606-547-6144 or Email paths20@aol.com
American Red Cross: Call 304-526-2900
Cabell County EMS: Contact Lisa Cooper 304-526-9797
Salt Rock Fire Dept.: Call 304-733- 9040
Goodwill Industries of KYOWVA Area, Inc.: Contact Andrea Lupson 304-523-7461 ext.417

Lincoln County: Dorothy or William Frazier: Call 304-778-3873

Logan County: LEASA County Public Rescue: Call 304-752-0917
Logan Regional Medical Center: Contact Cindy Fleming—Education Dept. 304-831-1556

Mason County: Pleasant Valley Hospital: Call 304-675-4340

Putnam County: Active Sports Complex (aka Ayash Center): Contact Scott Nasby 304-741-4079

CPR & FIRST AID CLASSES

Available in Boone, Cabell, Lincoln, Logan,
Mason, Mingo, Putnam and Wayne Counties!





YOU'VE GOT TRAILS

Quarterly Tidbits From Your TRAILS Team

Autumn Health & Safety Tips



Test Fire and CO Alarms



Fall is a great time of year to ensure that fire and CO alarms are powered and working properly. Fire deaths are much more common in homes without working alarms. CO is odorless and invisible, so an alarm is essential.



Be Safe When **Trick** or Treating

- Top tips include:
- 1 - Go out in groups or with a parent.
 - 2 - Only eat wrapped, store-bought treats.
 - 3 - Be alert when crossing streets. Use cross walks and obey walk signals.
 - 4 - Look for **Teal Pumpkins** if your kids have allergies. These signal houses with treats that are safe for children with common food allergies, such as peanuts.



Don't Fall For Flu Myths

The Truth:

- 1 - Antibiotics cannot cure the flu because it's a viral infection.
- 2 - There is no cure for the flu. The best offense is a good defense - get a flu shot!
- 3 - Good hygiene is also one of the best ways to prevent the flu: wash your hands and cover your mouth when you sneeze or cough.



BEWARE OF ZOMBIES!



Think About Your Indoor Air Quality

- 1 - Consider indoor house plants like Aloe Vera or Bamboo Palm that may naturally improve your home's air.
- 2 - Look for low VOC products when buying cleaning supplies or painting materials. This helps reduce the buildup of harmful compounds in your house.
- 3 - Consider controlled, whole-home air purification and ventilation before you close your house up for the winter.

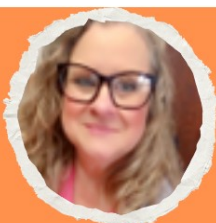


books about **FALL**

Fantastic Fun and Learning



New Theme Boxes are in the inventory! Make sure to request your favorite themes this fall!!

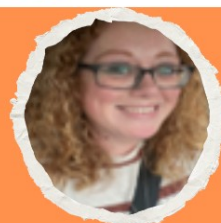


Melisa Dennison
TRAILS Early Childhood Specialist
Melisa.A.Dennison@wv.gov
304-523-9540 Ext. 3462



Your TRAILS Team

Amber Swindler
TRAILS Early Childhood Specialist
Amber.L.Swindler@wv.gov
304-523-9540 Ext. 3480



LINK CCR&R **TRAILS** *facts*



1

It's ALWAYS FREE

We never ask ANYONE to pay or replace broken, lost, ripped, or damaged items.

2

We make monthly visits

We schedule monthly visits for your county to drop off requested items and pick up current items.

3

TRAILS can be a lesson planning tool

Go to website and search for items to use for future lesson plans. Contact us for log-in information.

4

We offer Training & TA

Contact us for training or support in your environment.

**TO REQUEST TOYS,
BOOKS & OTHER
RESOURCES VISIT
LINK'S WEBSITE OR
SCAN QR CODE:**



HOW TO REQUEST FROM SOUTRON



1

LOG INTO SOUTRON

Log into Soutron using the username and password provided by TRAILS.

2

SEARCH FOR TOYS

Search for toys by either typing in key words or searching by interest area. Bonus tip: You can also filter results by age!

3

CHECK THE BOX

Click the box to the right of the desired item. If item says “1 copy currently available,” then we have it in stock right now!

4

REQUESTING ITEM

Click “Actions” in the left corner, then click “Request.” A new screen will load.

5

ENTER EMAIL

Click “Add address” and enter your email address.

6

COMPLETE REQUEST

Click “Complete Request” in the bottom right corner.

7

YOUR TOYS ARE ON THE WAY!

TRAILS will deliver your requested items (if available) at your next visit!

**Attention
Providers**

Are you looking for ways to network and collaborate with other providers? Come join us to connect with and share some of your favorite tips, tricks and resources with other eager providers!

CARING AND SHARING COLLABORATIVE PARTNERSHIPS



Miranda West
Supervisor

Your paragraph text

Location: Link CCR&R
611 7th Avenue
Huntington, WV 25701

Date: October 09, 2025

Time: 6:30pm - 7:30pm



For More Information
Contact

Amy Willis



304-528-3443



Amy.D.Willis@wv.gov



The West Virginia Breastfeeding Friendly Child Care Designation (BFCCD) offers recognition to child care programs that support breastfeeding mothers.

Participating programs will receive support from the Infant/Toddler Coaching Specialists, Child Care Nurse Health Consultants, and Child Care Health Educators to complete the 10 steps of the initiative. Upon completion of the 10 steps, the site will receive a certificate of designation in addition to help with resources and start up.

For more information
please contact:

Samantha Davenport
Infant Toddler Coaching Specialist
Samantha.D.Davenport@wv.gov
304-528-3479



ACDS

Apprenticeship for Child Development Specialist

Program Requirements

Participants must work a minimum of 20 hours a week directly with children birth to age 12.

Participating programs include child care, head start, family child care, home visitation, public school, and afterschool.

Program Length

Classes are one night a week, two and a half hours, for 15 weeks a semester. Course completion requires four semesters.

Program Delivery

Classes are offered statewide. In-person delivery is the preferred method. If in-person classes are not offered in a region, virtual classes are available.

CONTACT

611 7th Avenue Huntington WV 25701

304-523-0433

E: wvacds@rvcds.org

Web: www.wvacds.org



Registration for spring semesters open November 1, and registration for fall semesters open June 1.





Believe in Me: Partnering with Families from the Start

Join us in 2026 for information about practices, policies, planning, and research; to have the opportunity to network with other professionals; and to participate in a diverse array of early childhood education discussions.

CELEBRATING CONNECTIONS

APRIL 22-24, 2026

**CHARLESTON COLISEUM &
CONVENTION CENTER**

This program is being presented with financial assistance as a grant from the West Virginia Department of Health, the West Virginia Department of Human Services, and the West Virginia Department of Education, and is administered by West Virginia Early Childhood Training Connections and Resources, a program of River Valley Child Development Services.

**REGISTRATION
OPENS**

JANUARY 2026



FOOD REIMBURSEMENT



For information about enrolling in the Family Child Care Food Program to help with the costs of meals and snacks you serve the children in your care, please contact the following agency:



<p><u>Central Child Care</u></p> <p>Serving Boone County (304) 382-0797</p>	<p><u>Pride of Logan County</u></p> <p>Serving Logan County (304) 752-6868 or (304) 752-1047</p>	<p><u>River Valley Family Child Care Food Program</u></p> <p>Serving Cabell, Lincoln, Mason, Mingo, Putnam and Wayne Counties (304) 523-3417 ext.3446 or 1-304-751-5253</p>
--	---	--

In accordance with Federal law and U.S. Department of Agriculture (USDA) policy, this institution is prohibited from discriminating on the basis of race, color, national origin, sex, age, or disability. To file a complaint alleging discrimination, write USDA, Director, Office of Civil Rights, 1400 Independence Avenue SW, Washington, DC 20250-9410 or call, toll free, (866) 632-9992 (Voice). Individuals who are deaf, hard of hearing or have speech disabilities may contact USDA through the Federal Relay at (800) 877-8339 or (800) 845-6136 (Spanish). USDA is an equal opportunity provider. and employer.



Fall Snack Mix

Ingredients:

Chex Cereal (12oz box)
Pretzel Sticks (160z bag)
Miniature Marshmallows (10oz bag)
M&M's Fall (11.40oz bag)
Candy Corn (18.5oz bag)
Raisins (12oz box)

Directions:

Mix and enjoy. It's really that simple!



CABELL/WAYNE FAMILY CHILD CARE ASSOCIATION



The Cabell Wayne Family Child Care Association would like to invite ALL providers from ALL counties to join. If you have any questions, feel free to call or text Kathy Baker, President, at 304-638-7578, or email her at mrskathys@comcast.net so you can start receiving information about the Association and other helpful information. They would like to have all providers' email addresses, so please email Kathy at the address above to be added to the listserv. They hope to see lots of new providers at the meetings.

THE cutest
PUMPKINS
IN THE patch



Are you interested in making \$6 more per child per day???? If so, contact Kathy Baker at 304-638-7578 or email at mrskathys@comcast.net for more details.



"Do you want to build a snowman?"
~ Princess Anna



WELCOME to our **Business Corner**

**In this space we hope to
share valuable information to
help you grow and sustain
your child care business.**

**Below is information about organizations who
offer free business training and coaching.**

Advantage Valley offers FREE business coaching and training for Boone, Cabell,
Lincoln, Mason, Putnam and Wayne counties.

<https://advantagevalley.com/entrepreneurship/>

<https://advantagevalley.com/contact/>

The WV Small Business Development Center offers FREE coaching and training
opportunities

<https://wvsbdc.com/services/>

<https://wvsbdc.com/training/>

WV Business Link offers FREE training opportunities

<https://wvbusinesslink.com/events/>

If you would like more information, contact
Cristie Dunbar, Link CCR&R Director at
304-528-3406 or Cristie.R.Dunbar@wv.gov

Congratulations



Living Water Child Care Center On becoming a Tier II quality program!



Pictured: Jessica Wilcoxon, Early Childhood Specialist at Link and
Jackie Branch, Director at Living Water Child Care Center

LINK CHILD CARE RESOURCE & REFERRAL

Link Child Care Resource & Referral is a program of River Valley Child Development Services, Inc. and is being presented with financial assistance as a grant from the West Virginia Department of Human Services.

Visit us on the web:

www.linkccrr.org or
www.rvcds.org

COME SEE US!



Link Office

611 7th Ave.
Huntington, WV 25701
(800) 894-9540 or
(304) 523-9540
(304) 697-4821 FAX

Link Child Care
Resource &
Referral
611 7th Avenue
Huntington, WV 25701



[www.facebook.com/](https://www.facebook.com/linkccrr)



<https://www.shutterstock.com/search/thank-you-winter>